



FirstNetTM



Developing the FirstNet Quality of Service (QoS), Priority and Preemption Framework

Brian Kassa

Director of Technology Planning and Development

A Common Framework is Vital



National Preparedness System

November 2011

NATIONAL INCIDENT MANAGEMENT SYSTEM

December 2008

National Emergency Communications Plan

2014

Emergency Management Institute FEMA

Resource Center Home Help

ICS Resource Center

Resource Center Contents

- **ICS Review Document**
A summary of key features and principles.
- **ICS Training Courses**
Access to related training materials and independent-study courses.
- **ICS Job Aids**
Printable job aids related to ICS positions and activities.
- **ICS Forms**
Printable versions of standard ICS forms.
- **ICS Position Checklists**
Printable checklists of ICS roles and responsibilities.
- **Glossary of Related Terms**
Alphabetical list of terms and acronyms, with definitions.
- **Reference Documents**
Printable versions of relevant reference documents.
- **Links**
A list of applicable resource documents and web sites.

Communications Unit Training

The Communications Unit (COMU) plays a critical support role within the Incident Command System (ICS). ICS establishes basic principles, practical tools, and a definitive nomenclature and structure for supporting incident-based emergency response.

The Communications Unit Leader (COML) heads the Communications Unit and is responsible for integrating communications and ensuring that operations are supported by communications. The COML must understand ICS and local response systems to support the efforts of Incident personnel.

- **Roles & Responsibilities of COMU Personnel**
- **COML Course Development**
- **COML Course Delivery**
- **AuxComm and COMT Courses**
- **Train-the-Trainer Courses**
- **Position Task Books (PTBs)**

Course descriptions, prerequisites and other requirements for these classes are listed separately on this website. *QEC/ICTAP sponsored classes will only be available via a Technical Assistance request through a state/territory's Statewide Interoperability Coordinator (SWIC).*

More Information...
For all COMU-related questions, please email COMU@hq.dhs.gov.

- **COMU Course & Prerequisite Details**
 - 2012 AuxComm
 - 2012 COML
 - 2012 COMT
 - 2012 COML TIT
 - 2012 COMT TIT
- **Documents & Forms**
 - COML Forms
 - COML/COMT Position Task Books
 - COML Communiqué (Released April 24, 2008)
 - COML Mobilization Guide (March 20, 2008)

Priority Framework Concept



The Nationwide Public Safety Broadband Network (NPSBN) is intended to enable a new class of communications assets as well as a common network supporting interoperable public safety communications which aligns to the NIMS/ICS/Communications Unit principles.

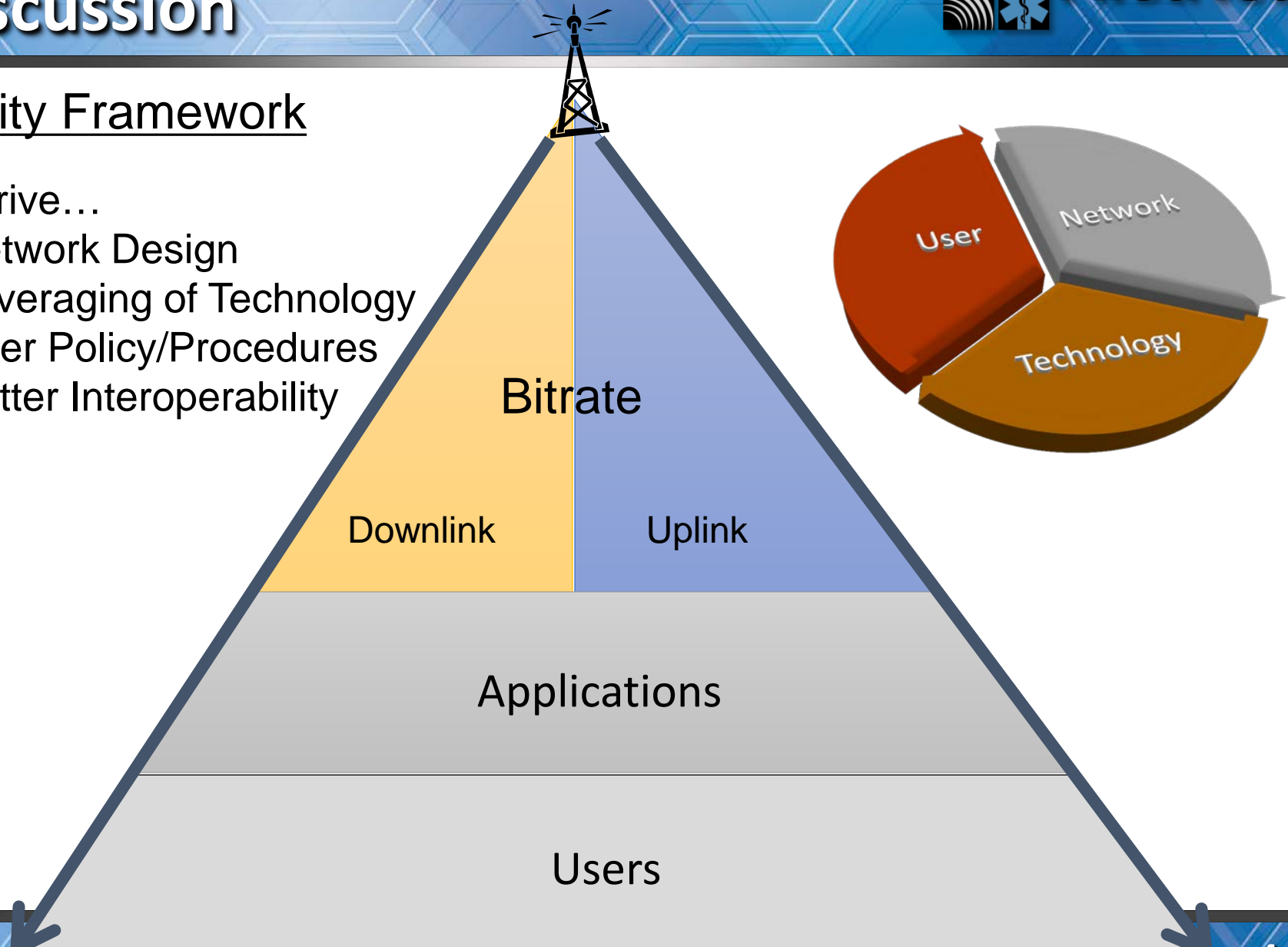
Developing a priority and quality of service framework will likely allow for a system design and policy that meets the day-to-day needs of public safety entities, but is capable of growing with incident severity. It will also allow for defining aspects of locally controlling priority access to the network by trained personnel.

Starting the Framework Discussion

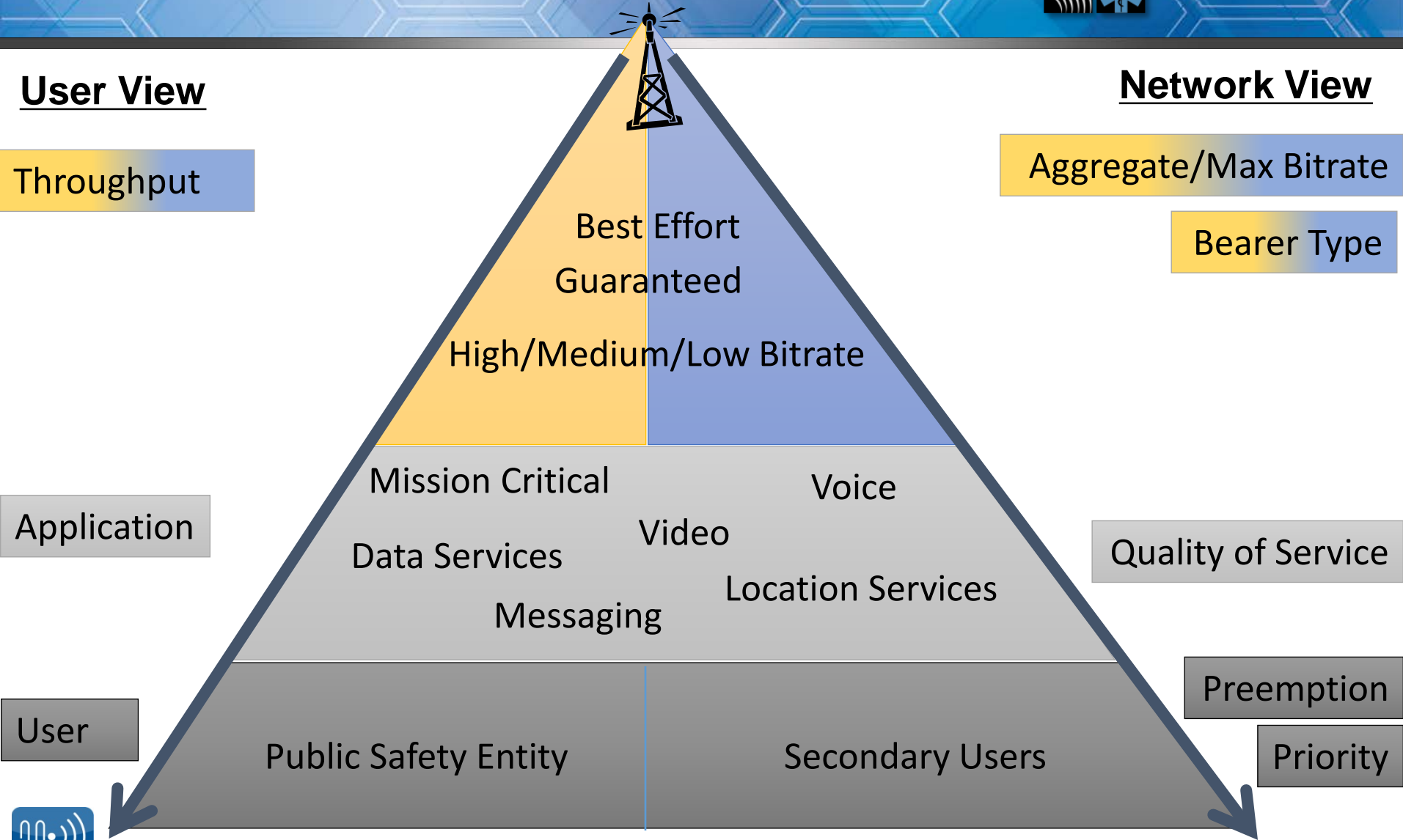
Priority Framework

Will drive...

- Network Design
- Leveraging of Technology
- User Policy/Procedures
- Better Interoperability



Visualizing a Framework



Public Safety Advisory Council and FirstNet plan to:

- Develop Usage Scenarios
- Define a number of Complex Incident Scenarios
- Execute Tabletop Exercises on the Incidents and manipulate the QoS, Priority and Preemption of the Usage Scenarios based on:
 - Role
 - Incident Complexity
 - Incident occurrence
- Develop initial Quality of Service, Priority and Preemption framework from knowledge gained
- Develop initial Local Control Framework from knowledge gained
- Iterate the model as we learn more

Thank You

