

# Mission Critical Maritime LTE Communications Deployment: U.S. Coast Guard Sector Key West



Mike Thorlin  
General Dynamics Mission Systems  
February 28, 2017

# Mission Critical Maritime LTE Communications

## *Introduction*

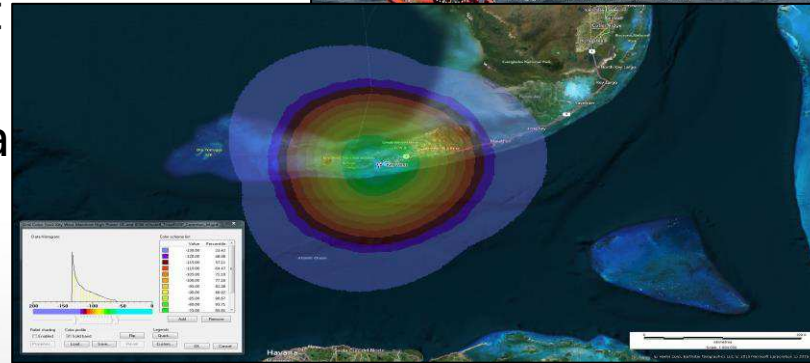
- Industry Team
- U.S. Coast Guard Research and Development Center
- U.S. Coast Guard Sector Key West



# Mission Critical Maritime LTE Communications

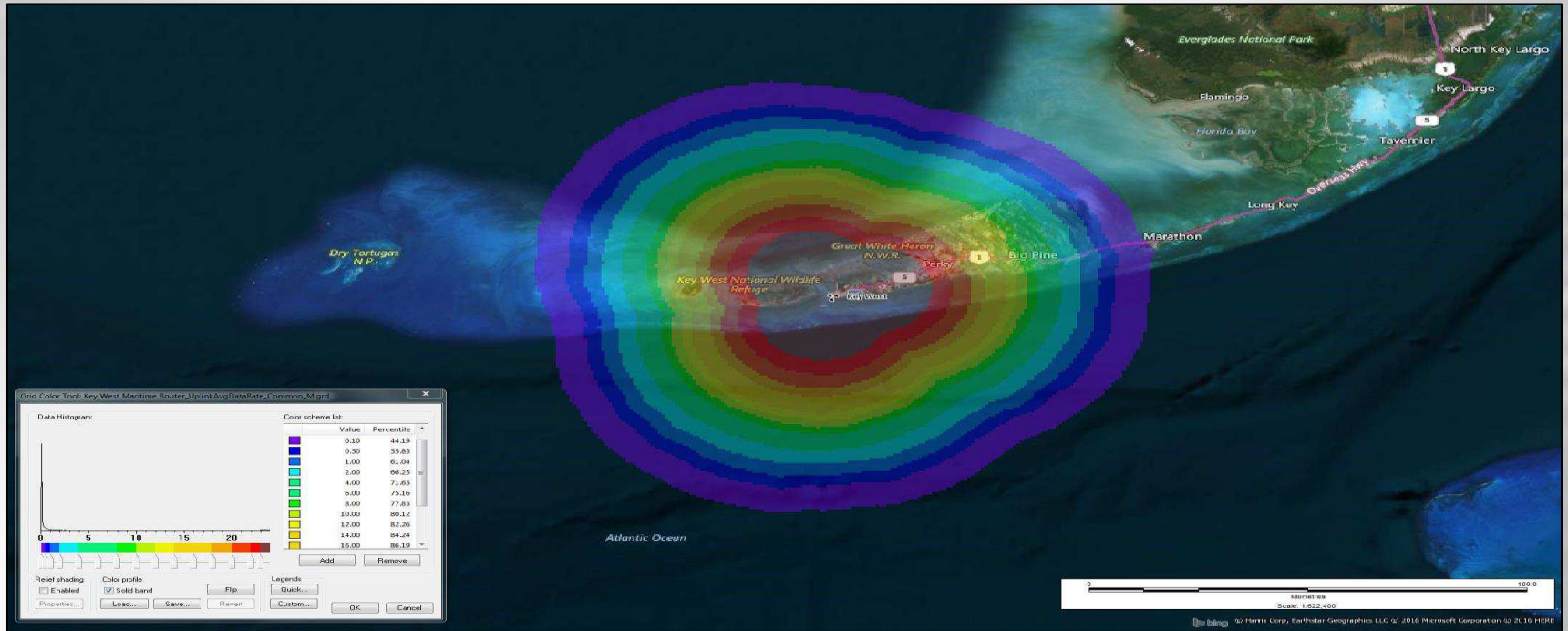
## *Coast Guard LTE CRADA*

- Investigate use of broadband digital communications in Coast Guard operations
- Evaluate LTE as a mission critical communications link for Coast Guard and multi-agency public safety and law enforcement operations
- Provide inputs to Coast Guard outreach to FirstNet



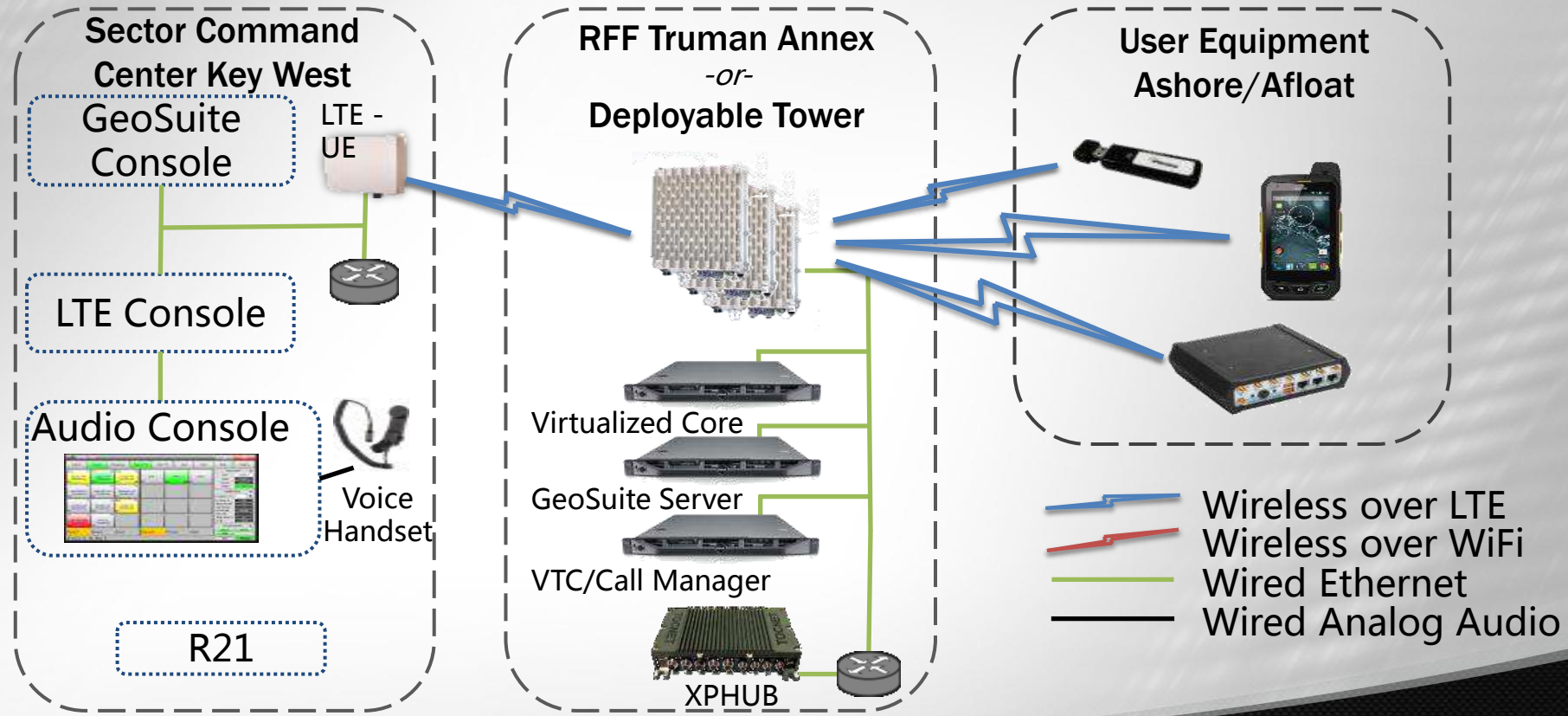
# Mission Critical Maritime LTE Communications

## *Projected Coverage Area*



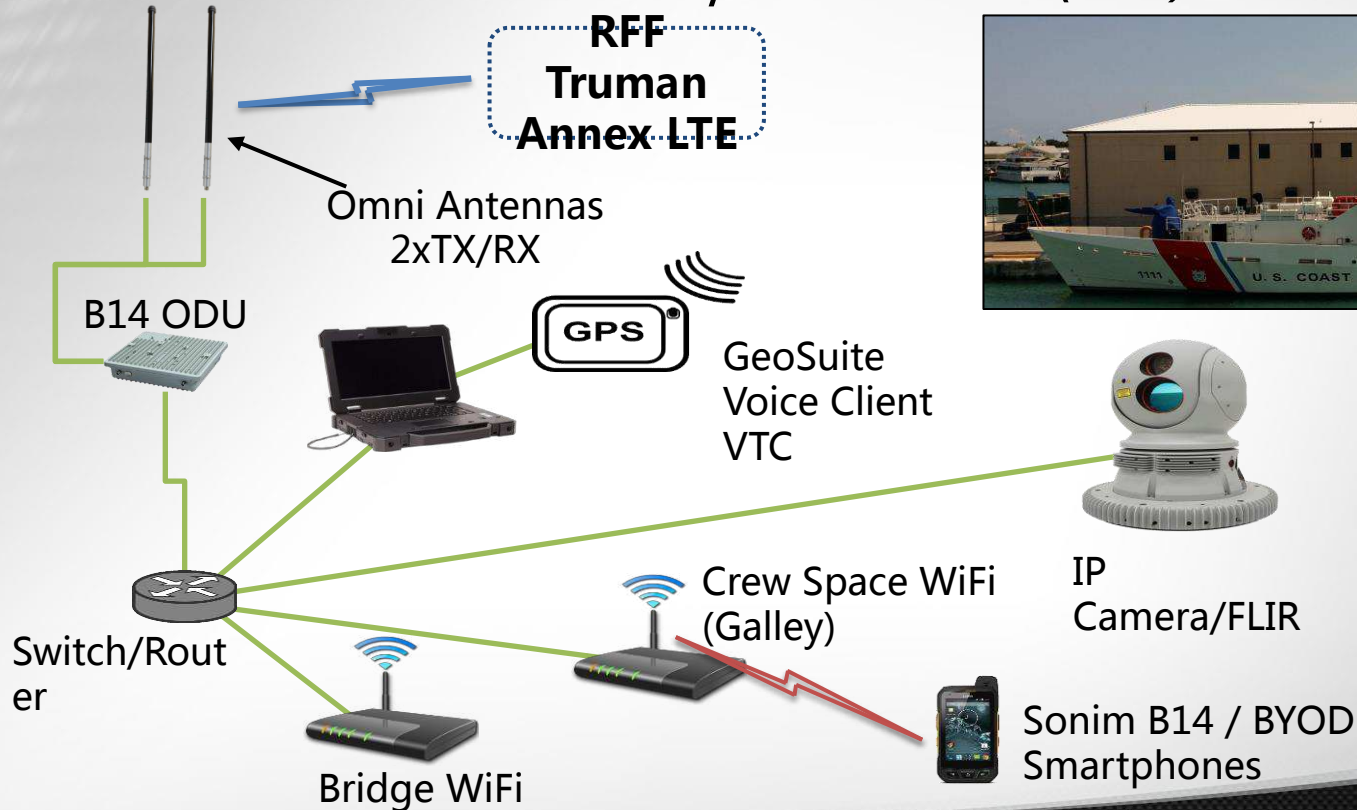


# Sector Key West LTE Implementation



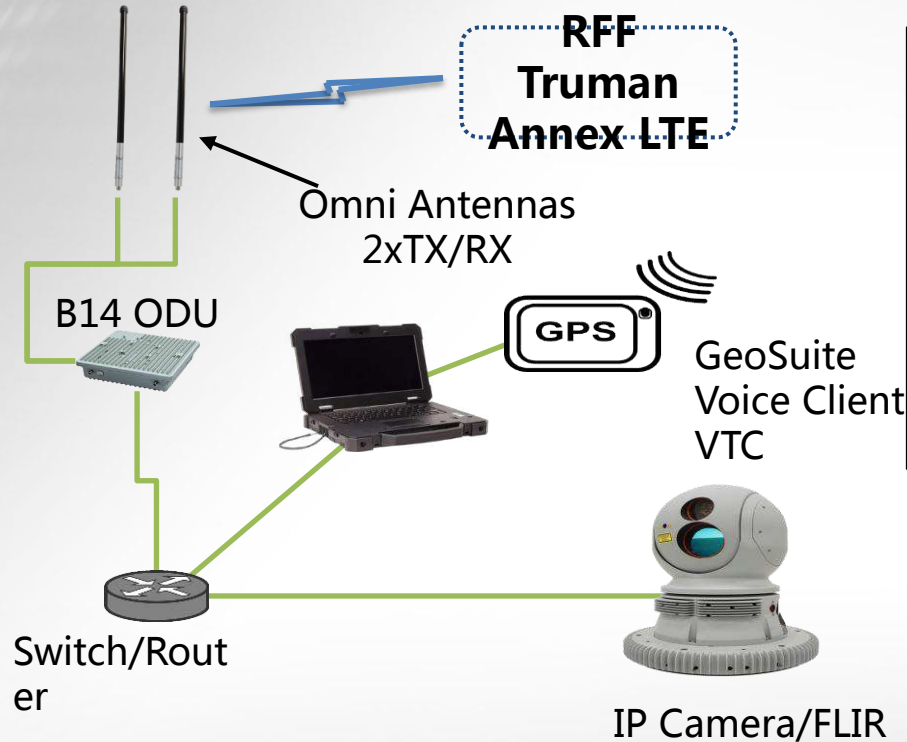
# Surface Vessel LTE Implementation

## *US Coast Guard Fast Response Cutter (FRC)*



# Surface Vessel LTE Implementation

## *US Coast Guard Medium Endurance Cutter (MEC)*



*Due to the LTE equipment being run into CIC (a secure area), WiFi is not feasible.*

# Surface Vessel LTE Implementation

## *US Coast Guard Response Boat Medium (RBM)*





# Surface Vessel LTE Implementation

## *US Coast Guard Small Response Boat (SRB)*



# Surface Vessel LTE Implementation

## US Coast Guard Cutter Boat



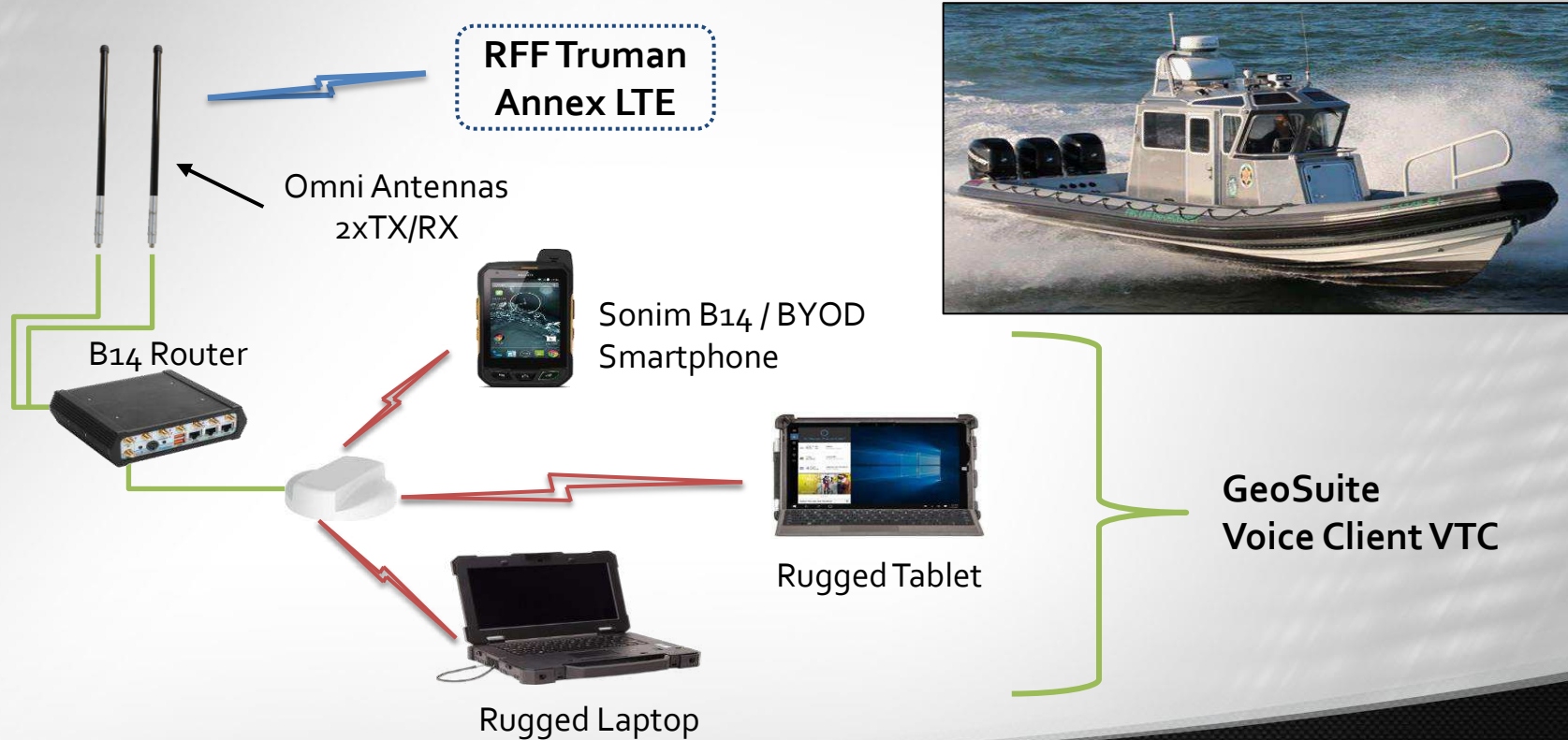
# Surface Vessel LTE Implementation

## *Customs and Border Protection (CBP) Mike Boat*



# Surface Vessel LTE Implementation

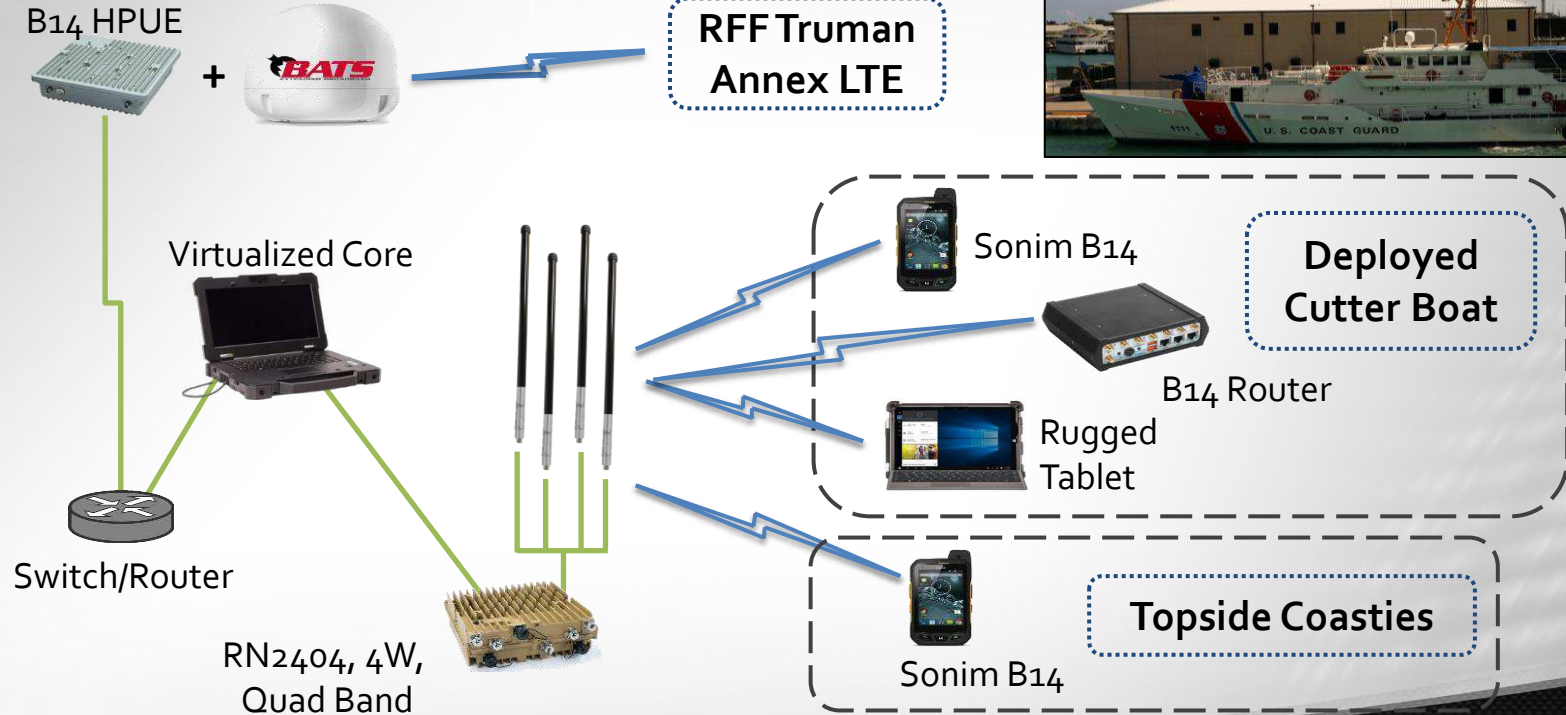
*Florida Wildlife Commission (FWC) Impact Boat*





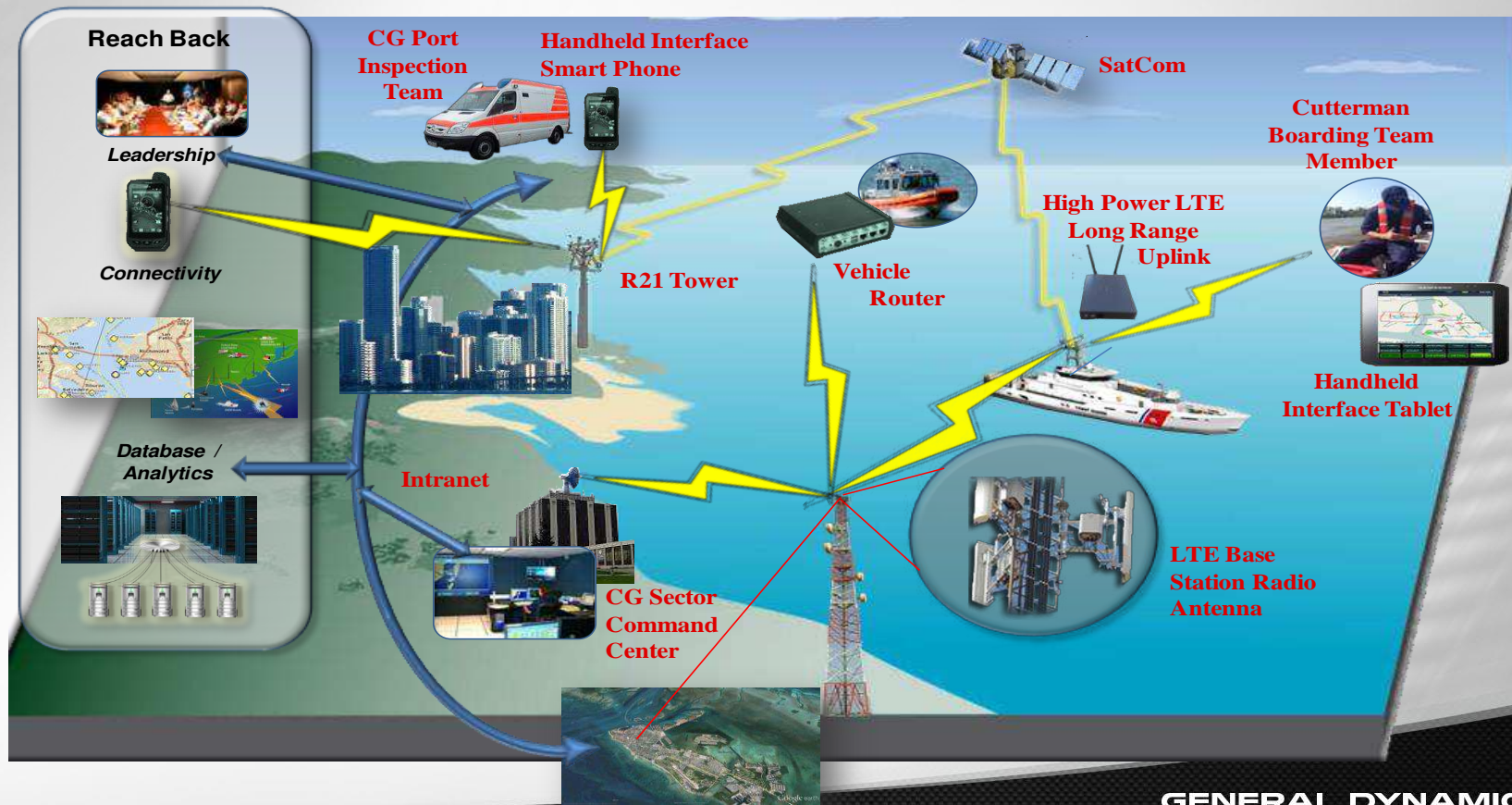
# Surface Vessel LTE Implementation

## *US Coast Guard Fast Response Cutter (FRC) – LTE Hot-Spot*



# Mission Critical Maritime LTE Communications

OV-1



**GENERAL DYNAMICS**  
Mission Systems

# Mission Critical Maritime LTE Communications

## *Use Cases As Applied to Sector Key West Mission Scenarios*

### ▪ **Ship to Shore**

- **Sharing Common Operating Picture data**
  - **Position Location Information**
  - **Photographs**
  - **Reports**
- **Transmitting High Resolution live video from on-scene to Sector Command Center**
- **Transmitting Bio-Metric Data from scene to adjudication authority**
- **Transmitting ships manifest documents**

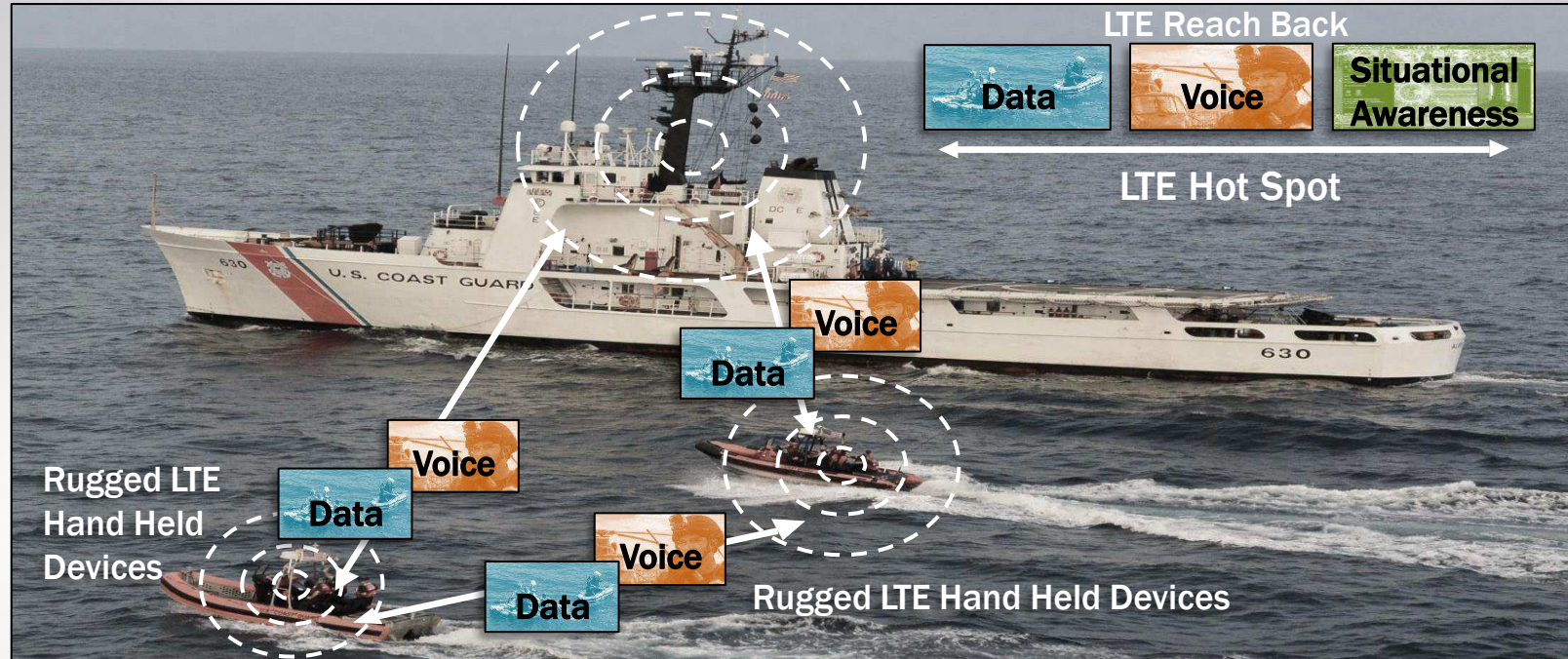




## ***Use Cases As Applied to Sector Key West Mission Scenarios***

- **Ship to Ship**

- **Transmitting voice and video between Cutters and boarding parties in support**





# Questions?

**Mike Thorlin** - *LTE Technology and Strategy*

General Dynamics Mission Systems

[Mike.Thorlin@gd-ms.com](mailto:Mike.Thorlin@gd-ms.com)

480-298-7314