

Notice

This material was prepared by the State of Texas using funds under award 48-10-S13048 from the National Telecommunications and Information Administration (NTIA), U.S. Department of Commerce (DOC). The statements, findings, conclusions, and recommendations are those of the author(s) and do not necessarily reflect the views of the NTIA, DOC, or FirstNet.

Images, graphics and other media embedded within this presentation have been licensed for use by the developer and the Texas Department of Public Safety/Texas Public Safety Broadband Program, and may be protected under United States and International Copyright laws. The unauthorized duplication, dissemination, transmission or other manipulation of these media may constitute a breach of the license agreement and a violation of applicable laws. Users accept all responsibilities and liabilities accordingly.

A stylized graphic of the Texas state flag, featuring a white star on a blue field and red and white horizontal stripes, positioned behind the program title.

Texas Public Safety Broadband Program

The View From Texas: FirstNet Planning & Early Builders





- SMLA signed in August 2014
- Includes 5 Key Learning Conditions:
 1. Core Transition
 2. Data Analytics
 3. Special Events
 4. Extended Mode
 5. Training



- Spectrum for Harris County build-out
- Retain site at College Station/Disaster City
- Deployable eNodeB



Mobile eNodeB:

- Special Events
 - Band Class 14 deployed with WIFI nodes to bypass congestion and leverage existing devices
- Disasters
- Capacity augmentation



- Raising Awareness in Harris County and all across the state
- Providing Educational & Outreach Support
- Building the Vision & Roadmap of the future



Public Safety LTE **Harris County BigNET**

Shing Lin
Director of Enterprise Public Safety Technology
Services
Harris County ITC

Agenda

- What we've learned
- Key Concepts
- Move Forward Strategy
 - Program Phases
 - Phase Details
- Q&A



Lessons Learned (so far)

- Planning is critical
 - Business Model
 - Funding & Operating costs
 - Deployment
 - Location, Location, Location
- It's a business
- Education and Outreach



Key Concepts:

Mobile vs. Portable



Key Concepts:

Inbound vs. Outbound



Build Out Status

Current Status

13 Sites in Harris County service area

1 Site in Brazos County (Extended range test site)

1 Mobile Unit

Build Out Strategy

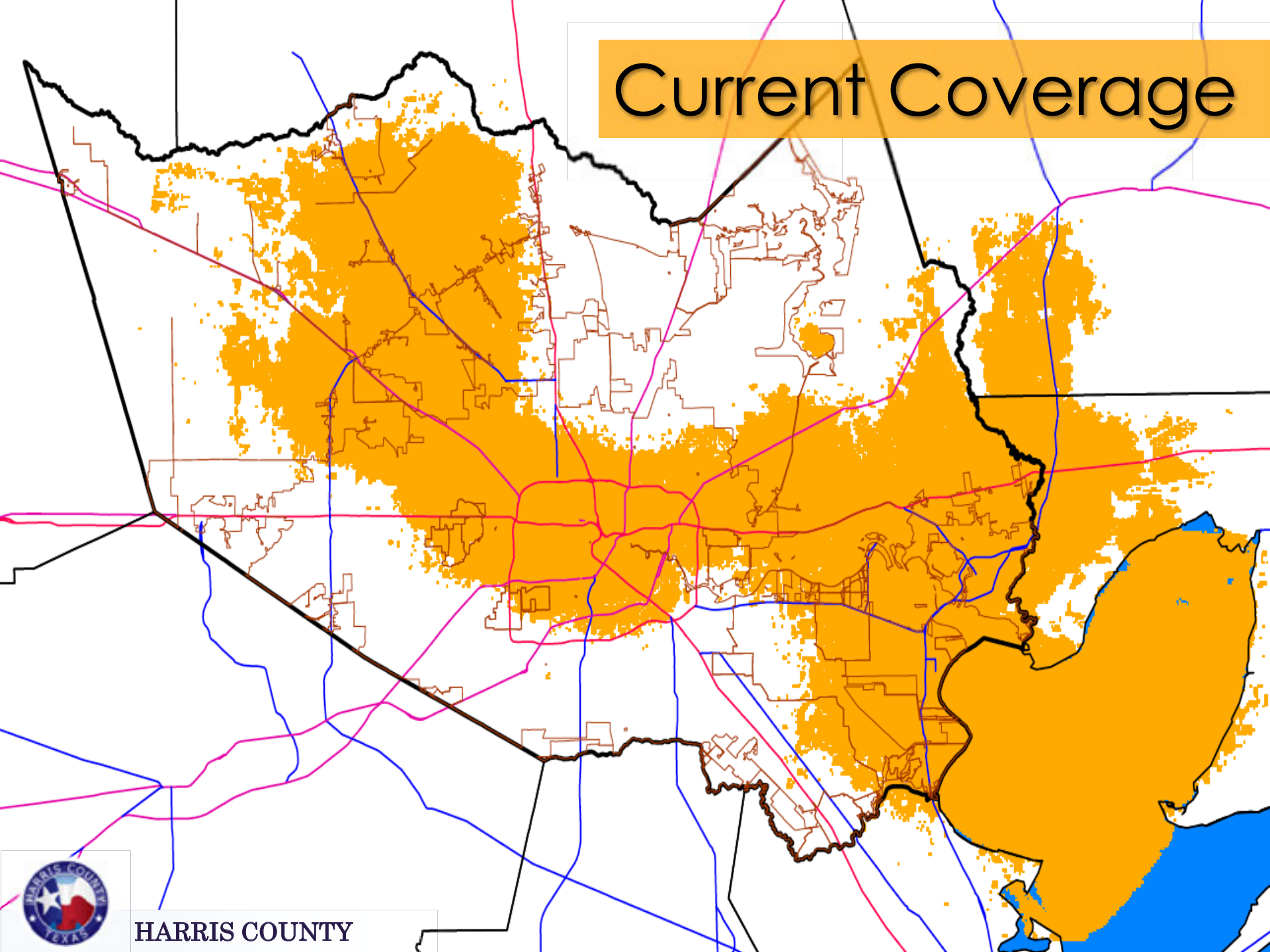
Mobile Coverage First (33 sites – min level of support)

Portable Coverage to follow (+60 sites)

- Investigate Voice

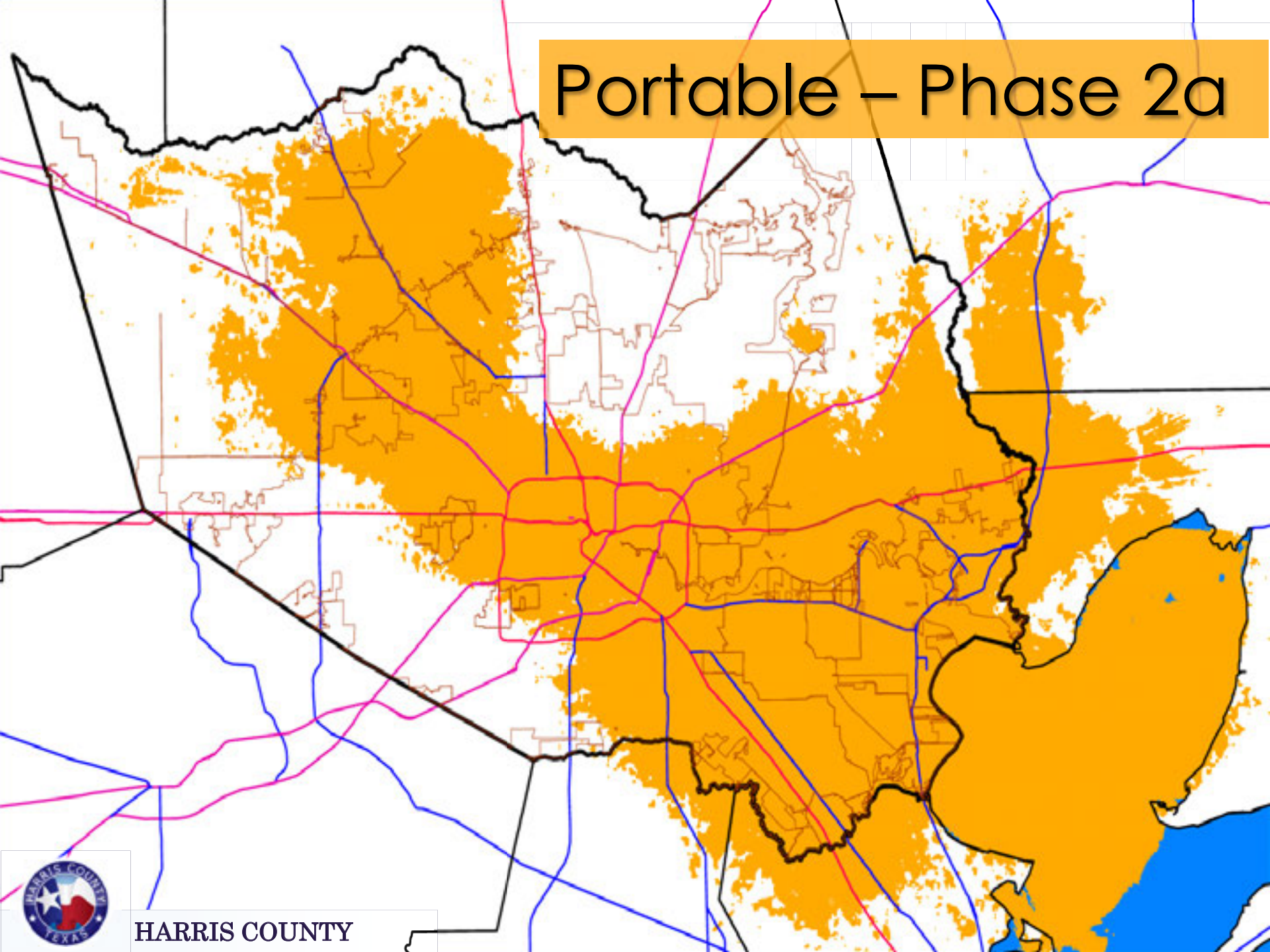


Current Coverage



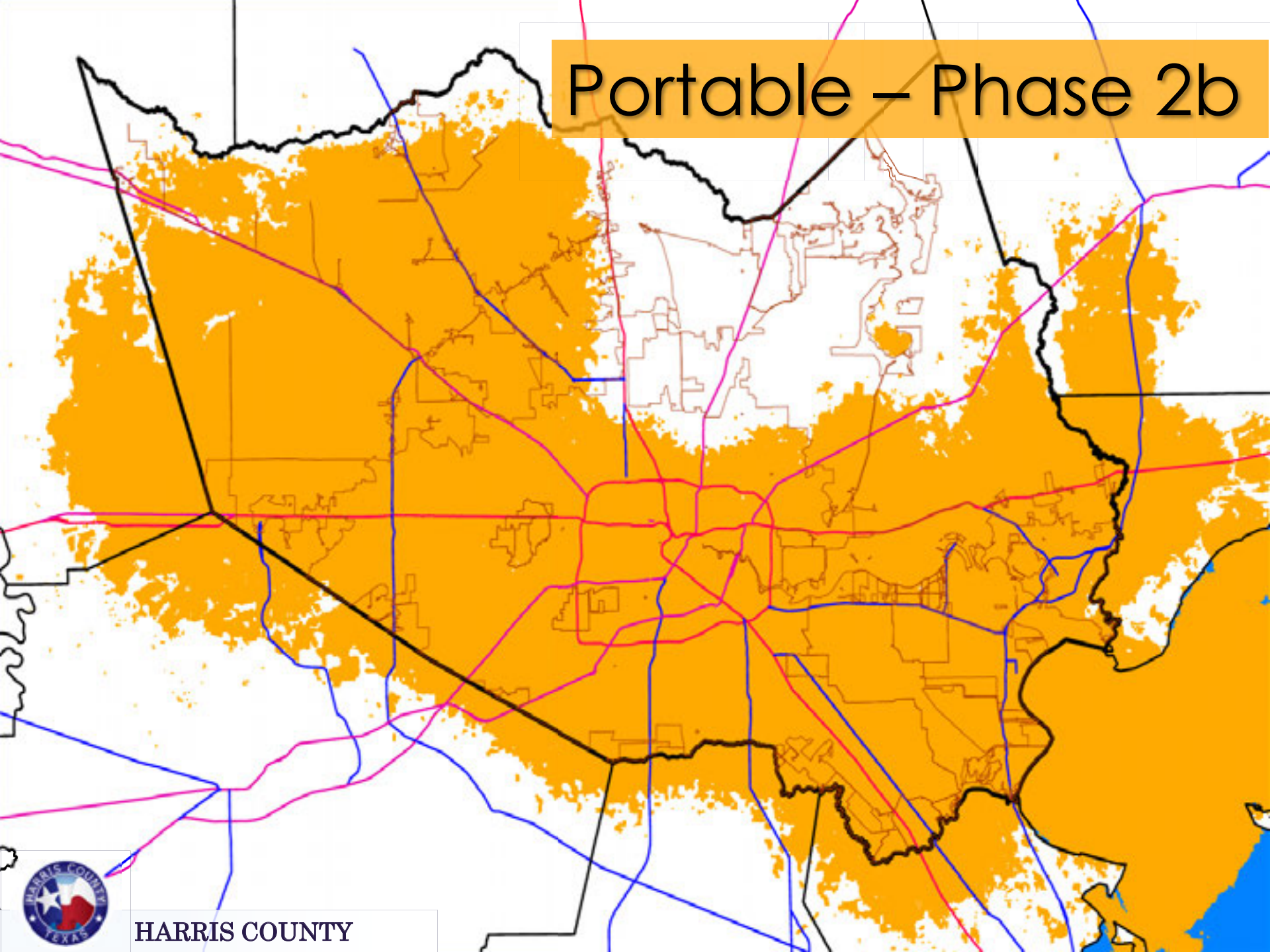
HARRIS COUNTY

Portable – Phase 2a



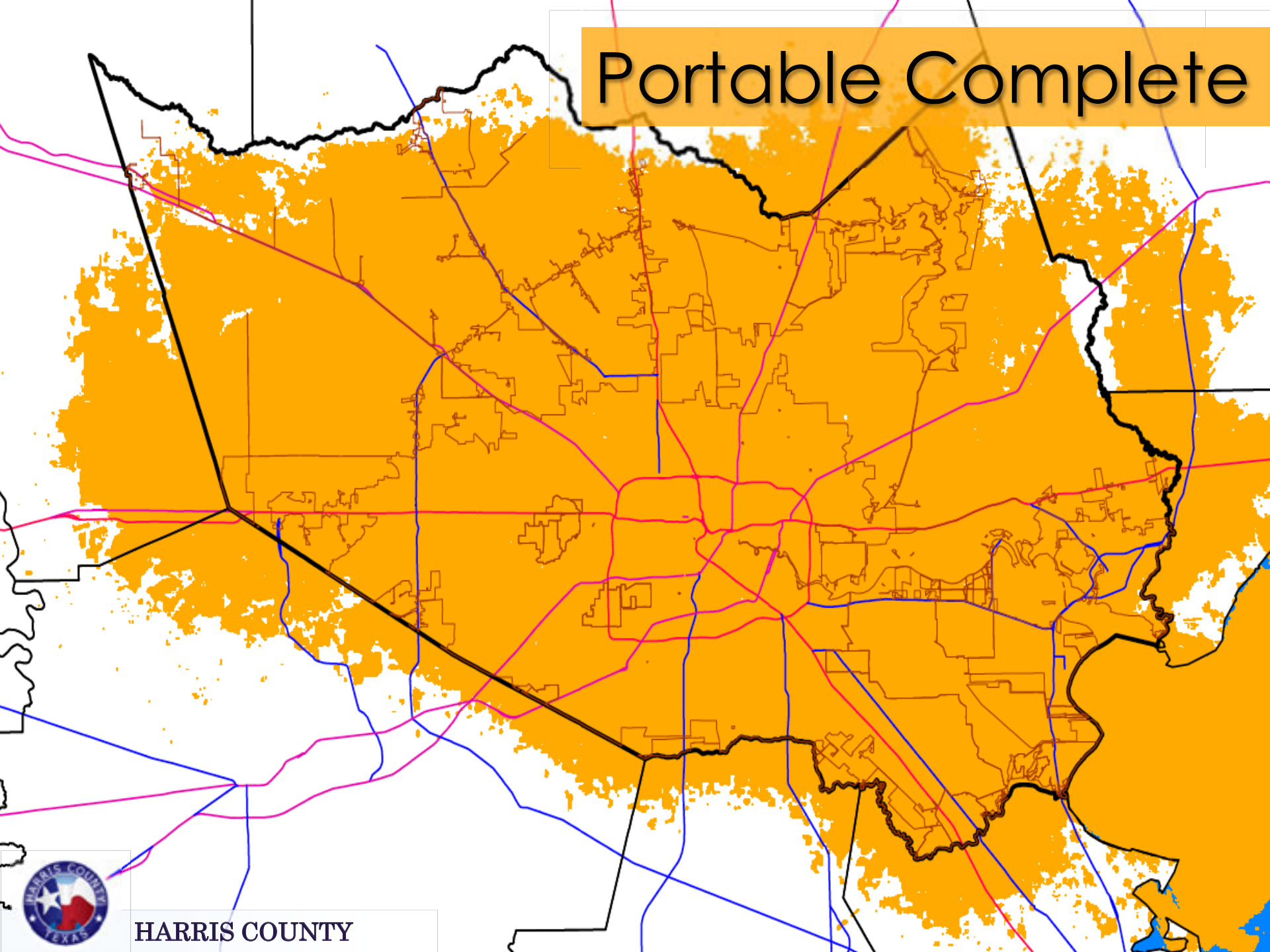
HARRIS COUNTY

Portable – Phase 2b



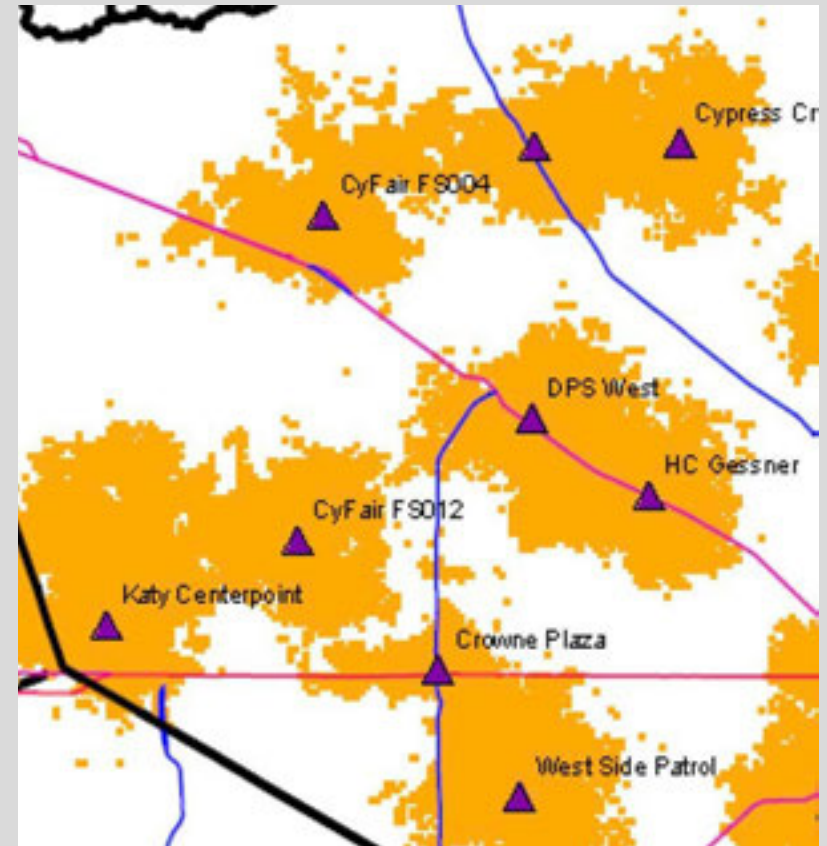
HARRIS COUNTY

Portable Complete

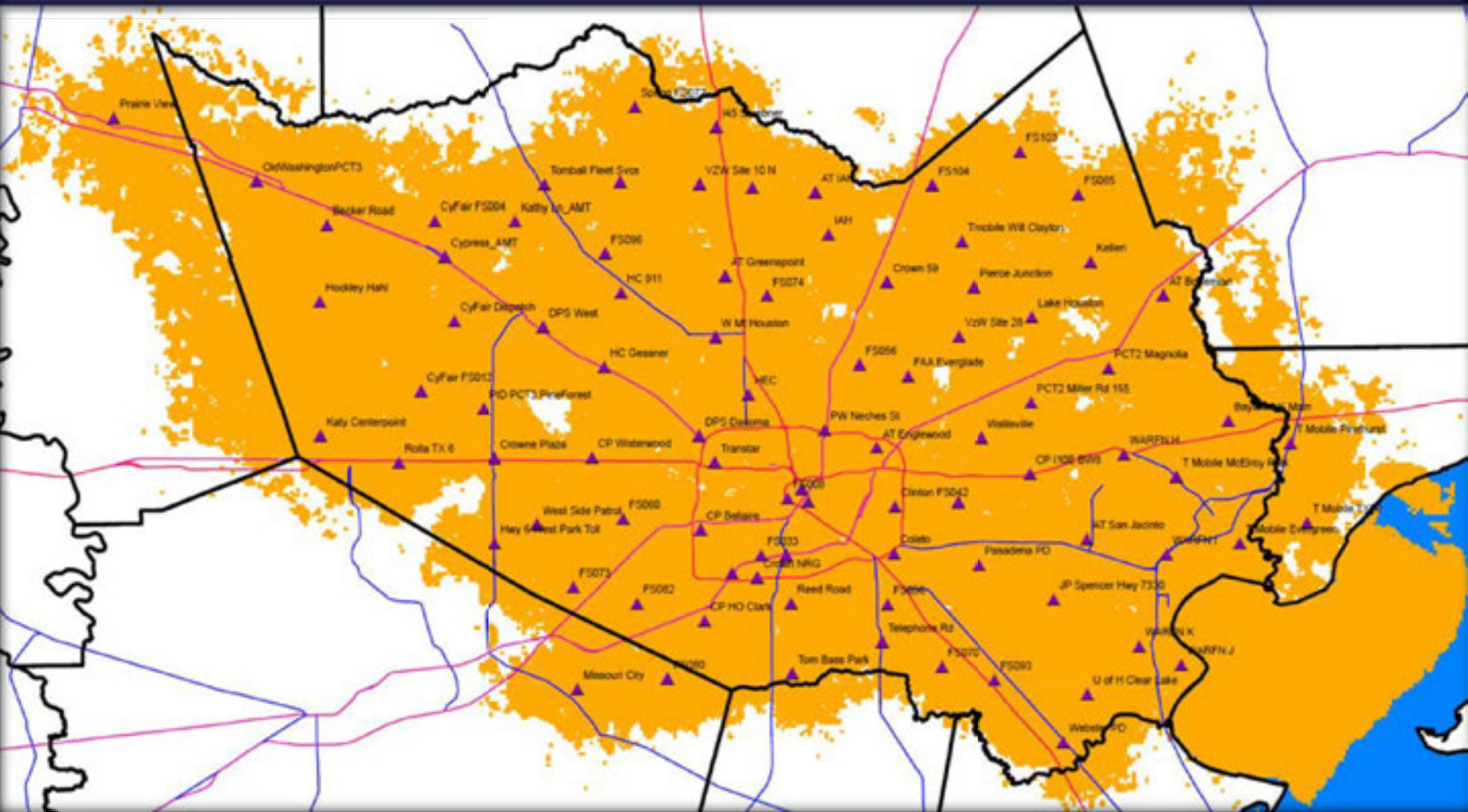


HARRIS COUNTY

Mobile vs. Portable Coverage

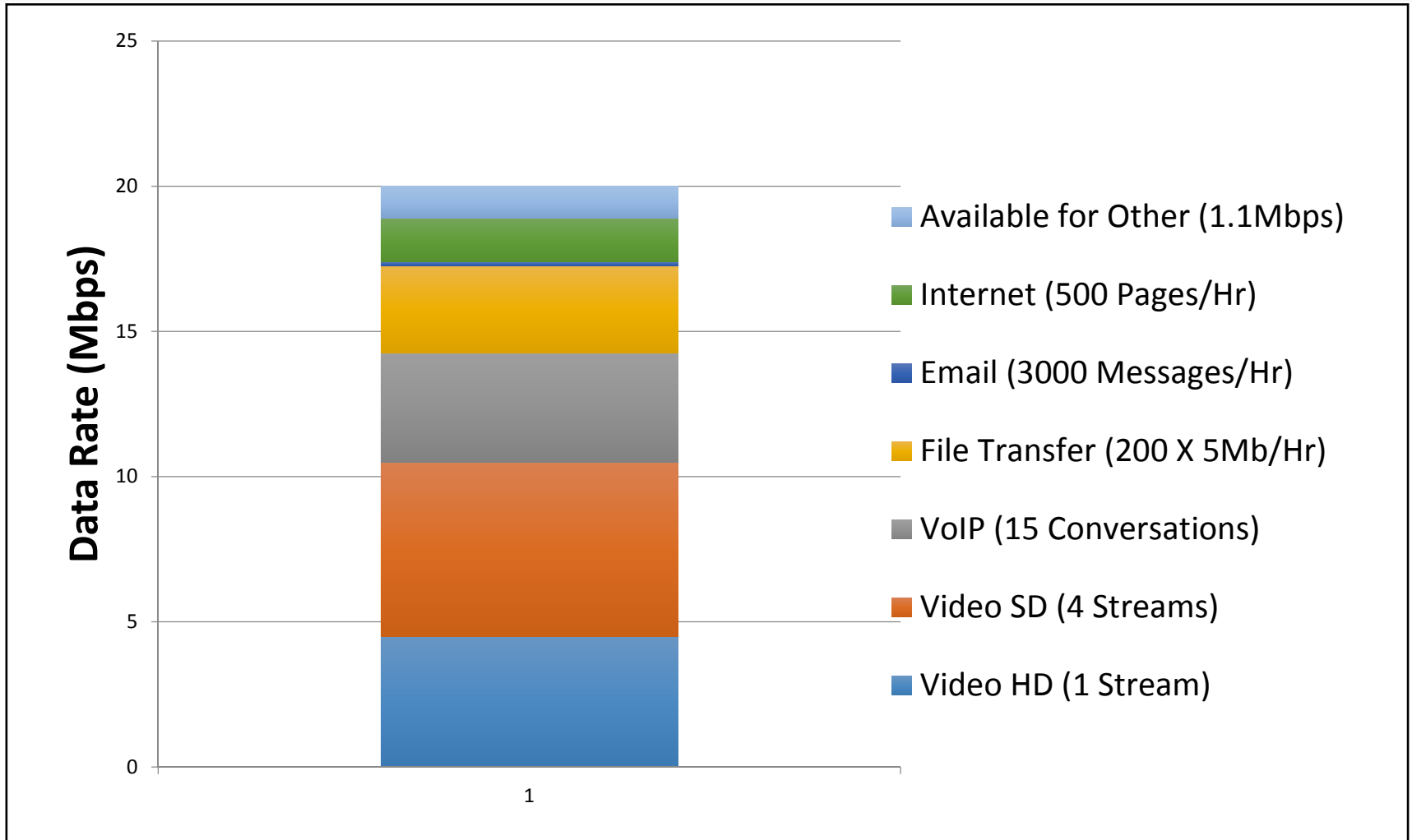


All Phases – Proposed Combined Coverage



HARRIS COUNTY

What Can be Expected?



From Concept to Reality

Other Considerations:

- Customer support systems
- Supported device plan
- Network Operations Center plans





Where Do We Go From Here?

2014

Awareness

2015

Planning & Design

2016

Evaluation



Where Do We Go From Here?

What we learn in Harris County
impacts all of Texas and the Nation



Why TxPSBP?

The State of Texas Public Safety Broadband Program's (TxPSBP) mission is to work in conjunction with FirstNet to plan a dedicated broadband network for public safety across Texas.

[Read more »](#)

Learn

- [What is public safety broadband?](#)
- [Who is FirstNet?](#)
- [What is TxPSBP?](#)
- [How is it funded?](#)
- [Who are Early Builders?](#)

Get Involved

- [Regional Planning Meetings](#)
- [Broadband Planning Teams](#)
- [Strategic Advisory Groups](#)
- [Upcoming Events](#)
- [Sign up for the Newsletter](#)
- [Request a Speaker](#)

Vision

- [Your Discipline](#)
- [Applications](#)
- [Benefits](#)
- [The Future](#)

Menu

Desktop

Welcome and Viewing Needs

- Navigating the Course
- Course Overview
- Wireless Broadband Network
- Public Safety Current Uses
- Fact or Myth
- Public Safety Broadband Net...
- National Disasters
- Growth of Consumer Traffic
- Current Data Communication
- Commercial Carrier Limitations
- Differences
- Similarities
- Land-Mobile Radio (LMR)
- Continued LMR Use
- Applications – Interdisciplina...
- Applications – Discipline Spe...
- New Cellular Broadband Net...
- FirstNet
- Benefits of FirstNet
- The Road to the Public Safet...
- Funding Model
- Costs
- Texas Participation
- Texas Public Safety Broadband
- State and Local Implementat...
- Whole Community Impacts
- Local Input
- BIG-Net
- Public Safety Broadband Net...
- Summary

Introduction to Public Safety Broadband

Resources

**Texas Public Safety
Broadband Program**

Introduction to Public Safety Broadband

Welcome to Introduction to Public Safety Broadband

Choose your viewing needs to begin.



Desktop/
Laptop



Assistive
Device User

- Welcome and Viewing Needs
- Navigating the Course
- Course Overview
- Wireless Broadband Network
- Public Safety Current Uses
- Fact or Myth
- Untitled Slide
- National Disasters
- Growth of Consumer Traffic
- Current Data Communication
- Commercial Carrier Limitations
- Differences
- Similarities
- Land-Mobile Radio (LMR)
- Continued LMR Use
- Applications - Interdisciplina...
- Applications - Discipline Spe...
- New Cellular Broadband Net...
- FirstNet
- Benefits of FirstNet
- The Road to the Public Safet...
- Funding Model
- Costs
- Texas Participation
- Texas Public Safety Broadband
- State and Local Implementat...
- Whole Community Impacts
- Local Input
- BIG-Net
- Public Safety Broadband Net...**
- Summary



Introduction to Public Safety Broadband

Public Safety Broadband Network: Example Scenario

Pitcher Bridge Collapse

At 7:34am an international vessel, The Curie, struck the pylons of the Pitcher bridge. At the time of impact, 12 cars were on the bridge with 17 passengers, and 100 crew members were on the ship with 24 seriously injured.

The number of responding agencies grows as more information is discovered. Interoperable communications is key in saving lives and property.

Select the next button to review the communication efforts during this incident.



2015 Initiatives


Texas Public Safety
Broadband Program

Priority Ranking:

Creating an
objective tool to
rank counties for
build out

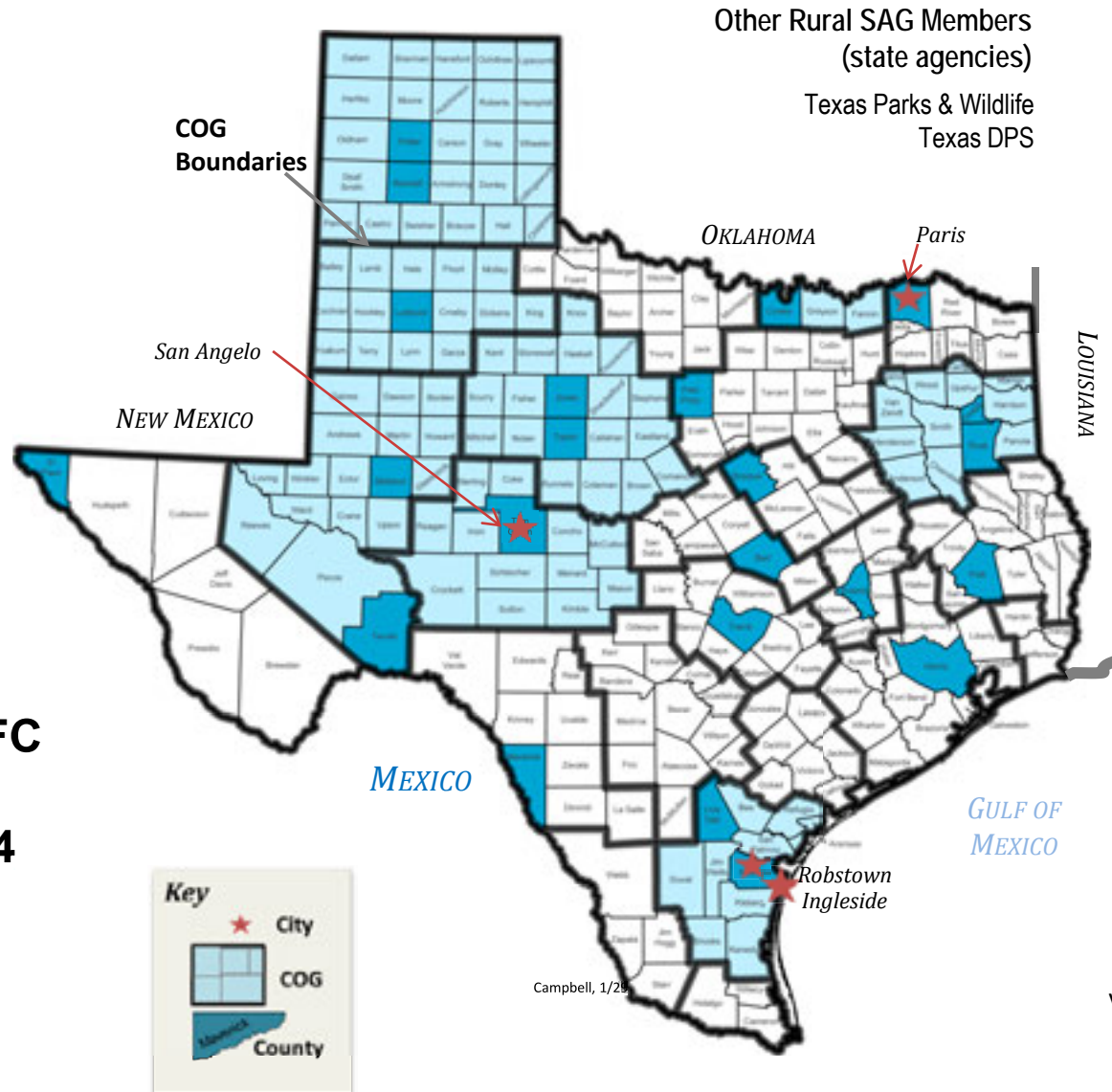
Optimum Network Design

Information Gathering:

Documenting the
needs/requests of
jurisdictions

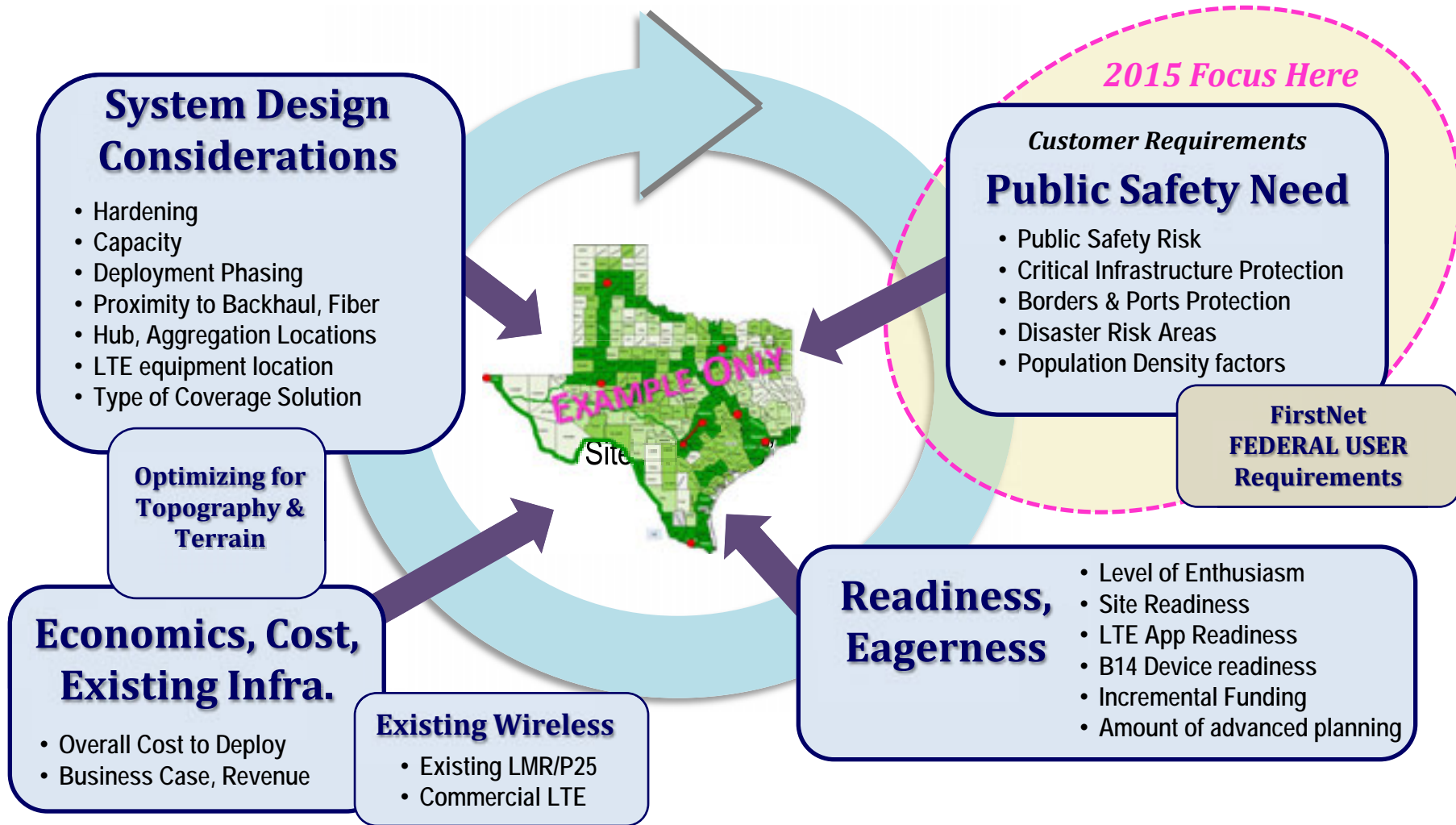
Coverage & Prioritization Tool:

- **City, Tribal, County, State, Emergency Management and Council of Governments (COGs) members**
- **Initiated from SLIGP Governance**
 - Via recruitment and a statewide solicitation for volunteers
- **Stood up in August 2014**
- **First deliverables NTIA RFC & FN RFI papers on “rural areas” definitions, 4Q2014**



Coverage & Prioritization Tool:

We realize getting to a Final (“shovel ready”) System Design requires highly skilled designers and a highly iterative process across a variety of complex considerations.



Coverage & Prioritization Tool:

CAT WEIGHT	Weighting Matrix, Public Safety NEED BY COUNTY			Subfactor WEIGHT	Sub - Subfactor WEIGHT	CALCULATED Attribute Weight
10%	County Population Density					
	Dense Urban	More than 2500 persons/square mile	16%			1.6%
	Urban	More than 1000, less than 2500 persons/square mile	16%			1.6%
	Suburban	More than 300 less than 1000 persons/square mile	16%			1.6%
	Rural Suburban	More than 160 less than 300 persons/square mile	16%			1.6%
	Rural	More than 7 less than 160 persons/square mile	20%			2.0%
	Frontier	Less than 7 persons/square mile	16%			1.6%
			100%			
30%	Borders & Ports					
	International Border	Mexican border (all but Risk Area); - linear mi, add coastline	20%			6.0%
	Ports of Entry (Land)	Number of border crossing (count by county)	20%			6.0%
	Ports of Entry (Sea Ports)	Number of ports	30%			9.0%
	Border Risk Areas	High vol, LE add'l, high activity	30%			9.0%
			100%			
30%	Critical Infrastructure					
	Military Infrastructure	bases, facilities, MOVED MILITARY AIR TO AVIATION	5%			1.5%
	SPACE Infrastructure	space centers, surveillance and launch facilities	5%			1.5%
	Water Infrastructure	Dams, bridges, levees, wells, pipelines, sewage treatment plants	10%			3.0%
	Critical Government Infrastructure (non-PS)	Courthouses, other government facilities	5%			1.5%
	Energy Infrastructure - ALL			15%		
	Energy Infrastructure			16%		0.7%
	Producing Oil Wells	Producing Oil Wells by County		17%		0.8%
	Energy Producing Areas	Wind farms, solar panels, oil/natural gas fields, coal mines		16%		0.7%
	Natural Gas Pipelines & Infrastructure			17%		0.8%
	Oil Pipelines, Refineries			17%		0.8%
	Nuclear Power Plants	Somervell County (Comanche Peak) Matagorda County (South Texas)		17%		0.8%
				100%		
	PS Infrastructure			35%		
	PSAPs and PS Facilities	police & fire stations		15%		1.6%
	PS Aircraft Operations			15%		1.6%
	PS Ground Transportation Hubs			14%		1.5%
	PS Network Infrastructure	microwave, fiber, remote sites, aggr pts		14%		1.5%
	Evacuation Centers			14%		1.5%
	PS training facilities			14%		1.5%
	Prisons, Jails & Detention Centers			14%		1.5%
				100%		
	Critical Ground Transportation Routes			15%		
	Critical Highways	Miles of highway		20%		0.9%
	Railroad Right of Way	Miles of railroad right of way		20%		0.9%
	DOD Convoy Routes	Miles of convoy route		20%		0.9%
	Trucking Routes	Miles of trucking routes		20%		0.9%
	Evacuation Routes	Miles of evacuation routes		20%		0.9%
				100%		
	Non-Public Safety Aviation			10%		
	Commercial Aviation Infrastructure	Top 25 Airports, No. Enplanements Per Year (FAA)		25%		0.8%
	C130 capable, Military Air Bases			25%		0.8%
	Air Freight			25%		0.8%
	Aviation Communications Infrastructure			25%		0.8%
				100%		
10%	Natural Risk Areas					
	Ocean Coastlines	Miles of coastline		13%		1.3%
	Intercoastal Waterway Coastline	Miles of coastline		13%		1.3%
	Major Rivers	Miles of River not in flood plain		12%		1.2%
	Tornado Risk Areas	Square Miles by County		12%		1.2%
	Flood Plains	Square Miles by County		12%		1.2%
	Wildfire Risk Area	Square Miles by County		13%		1.3%
	Earthquake Risk Area	Square Miles by County		12%		1.2%
	Hurricane Risk Area	Square Miles by County		13%		1.3%
				100%		
20%	Public Safety Risk Areas					
	Crime Rate	Crime Rate by County		12%		2.4%
	Recreation Areas	ALL parks, campgrounds, caves, natural attractions		11%		2.2%
	Population Changes due to Seasonal Shifts & Tourism	San Padre Island		11%		2.2%
	Special Medical Response	(i.e., Ebola containment, Major Trauma Centers,)		11%		2.2%
	Nuclear Weapons or Storage Facilities (CBRN)			11%		2.2%
	HAZMAT Volatile Chemical Storage Facilities	fertilizer plants		11%		2.2%
	Large College Campuses			11%		2.2%
	Cattle, Beef, Livestock areas			11%		2.2%
	Large Regular Public Events			11%		2.2%
100%	checksum			TOTAL	100.0%	100.0%

V12.3



Current Rural SAG Consensus



How to Stay Informed



@FirstNetGov #FirstNet



First Responder Network Authority



www.firstnet.gov



How to Stay Informed



www.TxLTE.com



@TXLTE #TXLTE

A stylized graphic of the Texas state flag, featuring a white star on a blue field and red and white horizontal stripes, positioned behind the program title.

Texas Public Safety Broadband Program

The View From Texas: FirstNet Planning & Early Builders

