



## Emerging Technology Forum

**November 4-5, 2014**  
Embassy Suites Airport | San Francisco



## FirstNet

Security and Privacy Considerations



Scott Montgomery  
VP, CTO Public Sector  
[scott\\_montgomery@mcafee.com](mailto:scott_montgomery@mcafee.com)  
+1 240 498 2941 m



TM

# A Continued Digital Disruption

“Buckle Up Dorothy Because Kansas is Going Bye-Bye”

- Everything is Everywhere. Mission continues to move onto new platforms and technologies such as cloud, virtualization, mobile, social business, etc.
- Consumerization of IT. The line between personal (consumer) and professional (enterprise), devices, data and applications is at constant blur
- Big Data. The age of information explosion has arrived and is magnified by the need to support **anywhere anytime (application) access from any device including devices the organization does not own or control**
- Attack Sophistication. Security threats are targeted, highly effective, persistent, complex and far more evasive
- Consumer awareness of security and privacy is very low – demand for rich content, immediate access, and high performance outweighs anything else

# Communication Method Evolution

A timeline of US public safety comms

1800



1933



1970



1870



1940



2000

# Then a Funny Thing Happened

The Pace of Change Dramatically Intensified

2002



2007



2010



2004



2008

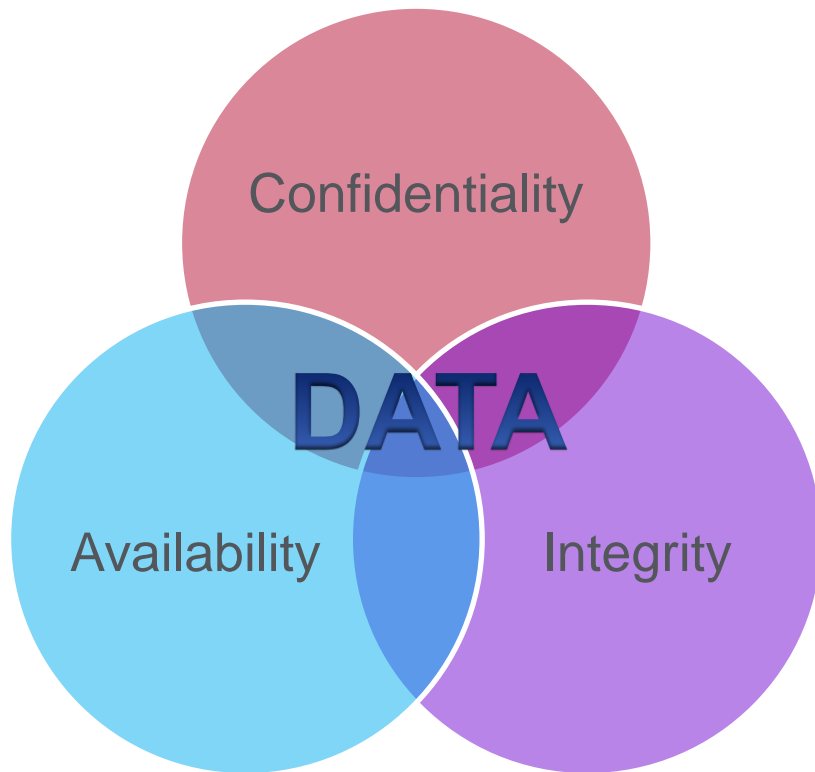


2012



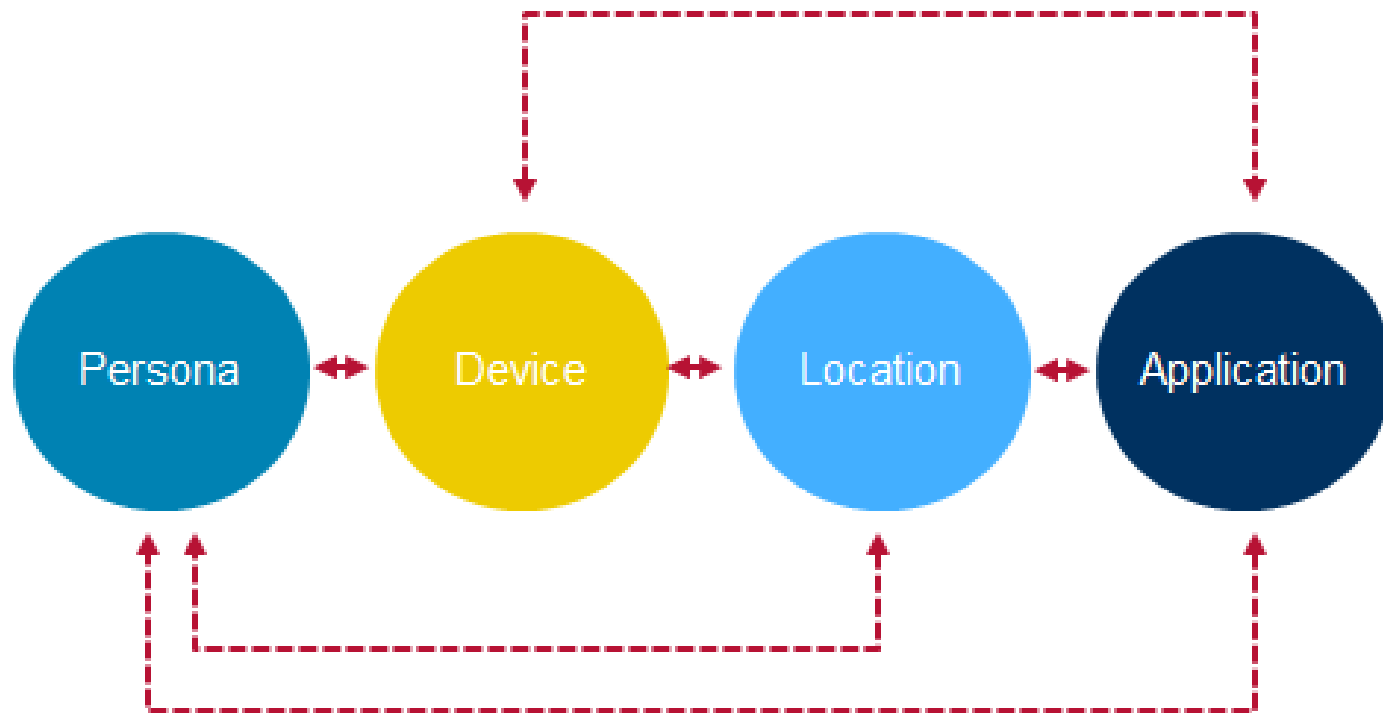
# Confidentiality, Integrity, Availability

All three are essential to Mission and Consumer Security and Privacy



# The New Entity

Many-to-Many Relationships Centered Around a Persona



# Moving Into a Multi-Dimensional Security Policies

Encompassing all factors is essential in making decisions

Different Personas  
Different Security  
Policies



Different Locations  
Different Security  
Policies

Different Applications  
Different Security  
Policies

Different Devices  
Different Security  
Policies

# Personas

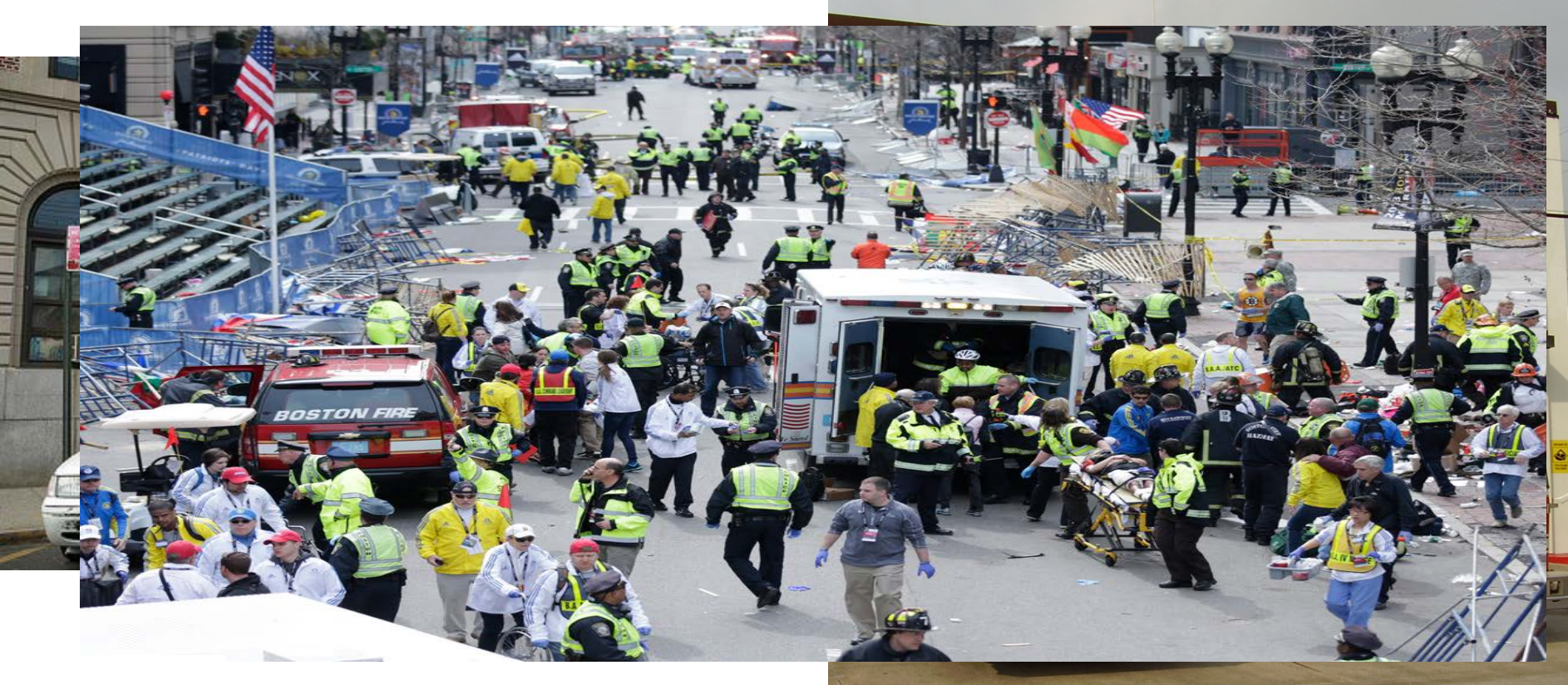
Some obvious, some not





# Location, Location, Location

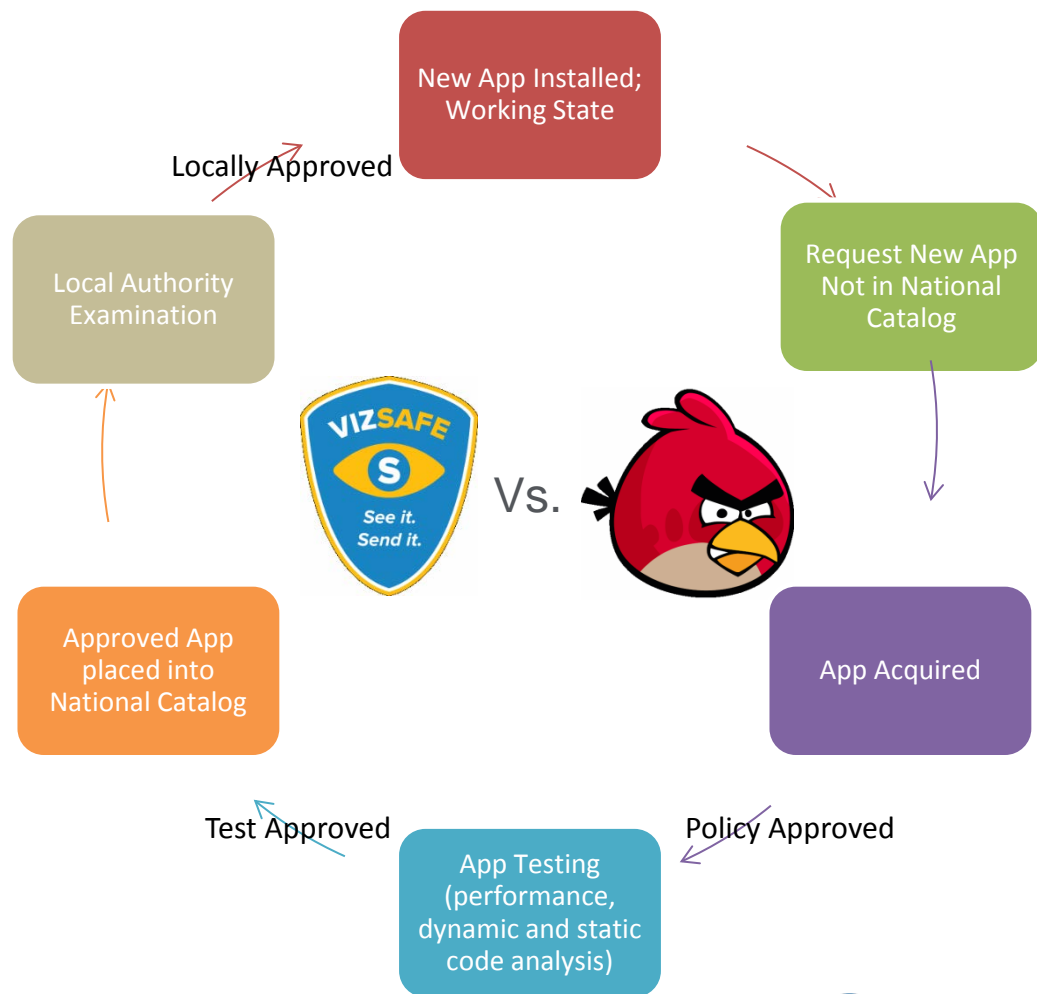
An absolutely essential dimension to ensuring security and privacy



# App Approval Flow

## National and Local Controls

- National Authority owns overall policy approval and testing centers
- App catalogues should be built according to role, access levels, permissions
- Local authorities have ability to be more restrictive than national catalogues by policy, but not less
- App approval process SLA driven to ensure timely delivery of assistance to field





# A Swell of Devices

## Ensuring proper oversight is essential

### M2M World of Connected Services The Internet of Things

