

## Emerging Technologies Forum

# BROADBAND AND THE FUTURE USER'S EXPERIENCE

Richard Coupland  
Director, Public Safety  
Market Development, GDC4S



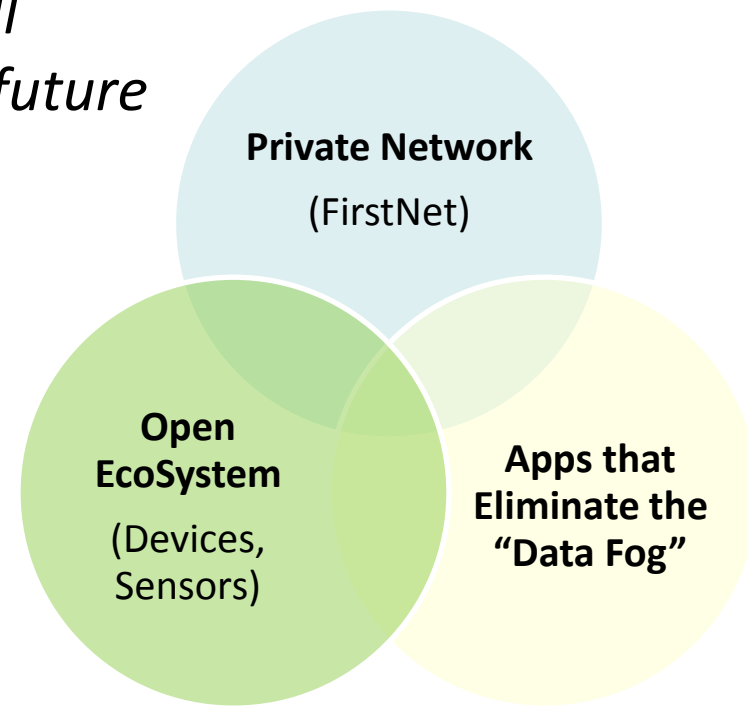
@rcouplandiii

**26-27 February 2014**

# Emerging Technologies in Public Safety

*Public Safety is beginning to discover a world of connected sensors and data that will transform the way you respond in the future*

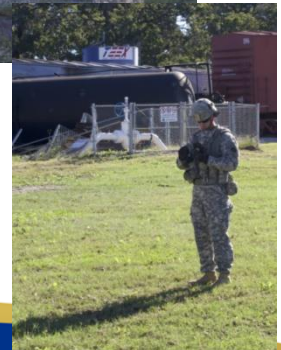
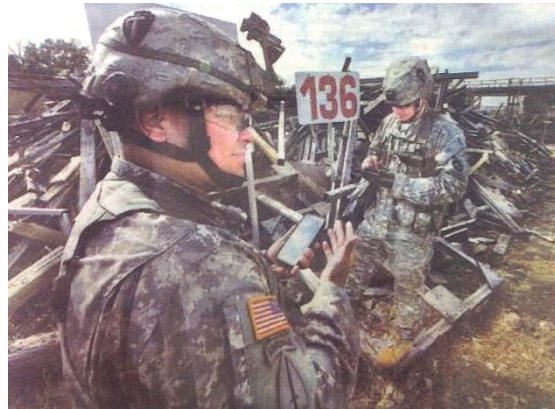
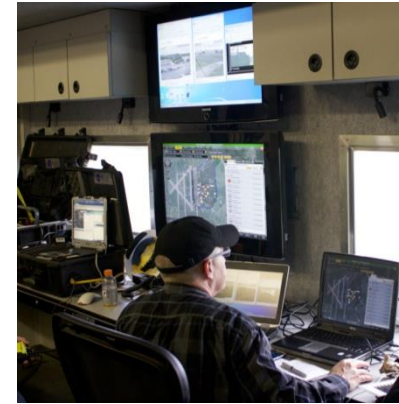
1. *Purpose-built private networks, meeting public agencies' demand for secure voice, data and video (the NPSBN by FirstNet)*
2. *Industry's offering of an open Eco-System of devices, end points and capabilities that run on the NPSBN*
3. *Unique visualization and collaboration apps that reduce the "Swivel Chair" paradigm, and manage the "Data Fog"*



# The Private Network

- Future Public Safety communications will rely on the 700 MHz LTE Network from FirstNet
- General Dynamics is a leading provider of 700 MHz LTE networks
  - Committed to research in 700 MHz LTE systems
  - Ongoing Internal Research and Development
  - Collaborative Research and Development with government, universities and industry partners

# The End in Mind – Better Connected Operations Between Dispatch, Incident Command and Responders



# How Do We Know?

- We have lived this digital transformation once before
- GDC4S has been at the forefront of the DoD transformation to “digital battle command” over the past 20 years



# A Look Back...

- Early 1990's – Gulf War triggers the need to better manage communications (networks) on the battlefield, for DATA, as well as Voice
- 1990's – Significant advancements in digital data networks, enable users to access far more data than they ever had before
- Late 90's, early 2000's – The surge of sensors, endpoints and raw data begins to consume the User's ability to make decisions → Creates the need for applications that “manage the complexity”
- 2005-2011 – Fielded systems (deployable networks, sensors, and applications) transform the ability to plan and execute the mission
- Today – New, Emerging Technologies continue to offer enhanced and expanded capabilities

## ... And A Look Ahead




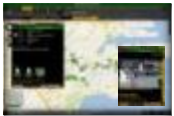


- Today – The Public Safety community articulates the need to better manage communications (networks) across the Nation, for DATA, as well as Voice
- 2013-2020
  - Initial broadband capabilities running over commercial or unlicensed spectrum show operational promise, but expose need for private Broadband
  - Realization of the NPSBN 700 MHz LTE data network, will enable users to see far more than they ever had before, in a dedicated spectrum band
  - The surge of sensors, endpoints and apps offering raw data will begin to consume the User's ability to make decisions → Creating the need for applications that “manage the complexity”
  - Applications key to the Public Safety and First Responder Mission will evolve, capable of access to all relevant data, but without undo burden on the PSAP or Responder

# Lessons Learned from Current Operations Over Commercial/Unlicensed Networks

- Overall Issue – Need for real-time connectivity between incident and command center in a clean spectrum
- Inability of existing broadband networks to support current deployments
  - NASCAR Race – Carrier back haul conflicted with 5.8 GHz network
  - Large Running Event – Federal Agency and Local/City Agency use of 4.9 GHz conflicted with our 4.9 GHz network
  - Downtown Demonstration Event – State Agency network conflicted at 4.9 GHz
  - General misuse of available public safety frequencies



# Emerging Technologies That Enable Responders

<u>Enabler</u>	<u>Users</u>	<u>Location</u>	<u>Benefit / New Capability Offered</u>
 <p>Private , Assured 700 MHz LTE Network</p>	<ul style="list-style-type: none"> <li>• All Users</li> </ul>	<ul style="list-style-type: none"> <li>• Throughout Area of Operations</li> </ul>	<ul style="list-style-type: none"> <li>• Private, Secure, Broadband Data</li> <li>• Infrastructure to integrate sensors and assets</li> <li>• Ability to collaborate and share across all users</li> </ul>
 <p>In-Vehicle Modems</p>	<ul style="list-style-type: none"> <li>• First Responders in Proximity to Vehicles</li> </ul>	<ul style="list-style-type: none"> <li>• Installed in First Responder Vehicles</li> </ul>	<ul style="list-style-type: none"> <li>• Connects to Private 700 MHz Broadband</li> <li>• Connects to Public Commercial LTE (Roaming / Fallback)</li> <li>• Integrates Vehicle Systems; Offers Position Location</li> <li>• Offers local WiFi around Vehicle</li> </ul>
 <p>Field Sensors and Devices</p>	<ul style="list-style-type: none"> <li>• Operators of Assets</li> <li>• Inc. Command Staff</li> <li>• PSAP / Dispatchers</li> <li>• All Networked Users</li> </ul>	<ul style="list-style-type: none"> <li>• Aerostat over Scene</li> <li>• Ground Robots in HAZMAT locations</li> <li>• Fixed or Mobile Video</li> </ul>	<ul style="list-style-type: none"> <li>• Offers video feeds that assist teams in situational awareness and better decision making</li> </ul>
 <p>Common Operating Picture</p>	<ul style="list-style-type: none"> <li>• All Networked Users</li> </ul>	<ul style="list-style-type: none"> <li>• Command Post</li> <li>• Vehicle MDTs</li> <li>• Field Laptops</li> <li>• Mobile Handhelds</li> </ul>	<ul style="list-style-type: none"> <li>• Map-Based Situational Awareness across all Users</li> <li>• Position Location of Networked Assets and Resources</li> <li>• Access to all data collected or interfaced from legacy systems</li> <li>• Access to all Video Feeds from Field Sensors and Devices</li> </ul>
 <p>Rugged Laptops / MDTs</p>	<ul style="list-style-type: none"> <li>• Any User in MDT-equipped Vehicle or with Rugged Field Laptop</li> </ul>	<ul style="list-style-type: none"> <li>• In-Vehicle Mobile Data Terminals</li> <li>• Rugged Field Laptops</li> </ul>	<ul style="list-style-type: none"> <li>• User Access to Broadband Applications and Video such as the Common Operating Picture</li> <li>• Field Access to back-end data systems and records</li> </ul>
 <p>Mobile Devices</p>	<ul style="list-style-type: none"> <li>• Any Mobile User equipped with a Networked Device</li> </ul>	<ul style="list-style-type: none"> <li>• Throughout Area of Operations</li> </ul>	<ul style="list-style-type: none"> <li>• User Access to Broadband Applications such as the Common Operating Picture</li> <li>• Ability to run future Apps to bring further value to Users in the Field</li> <li>• Voice over LTE</li> </ul>

# A Few Relevant Systems and Sensors...

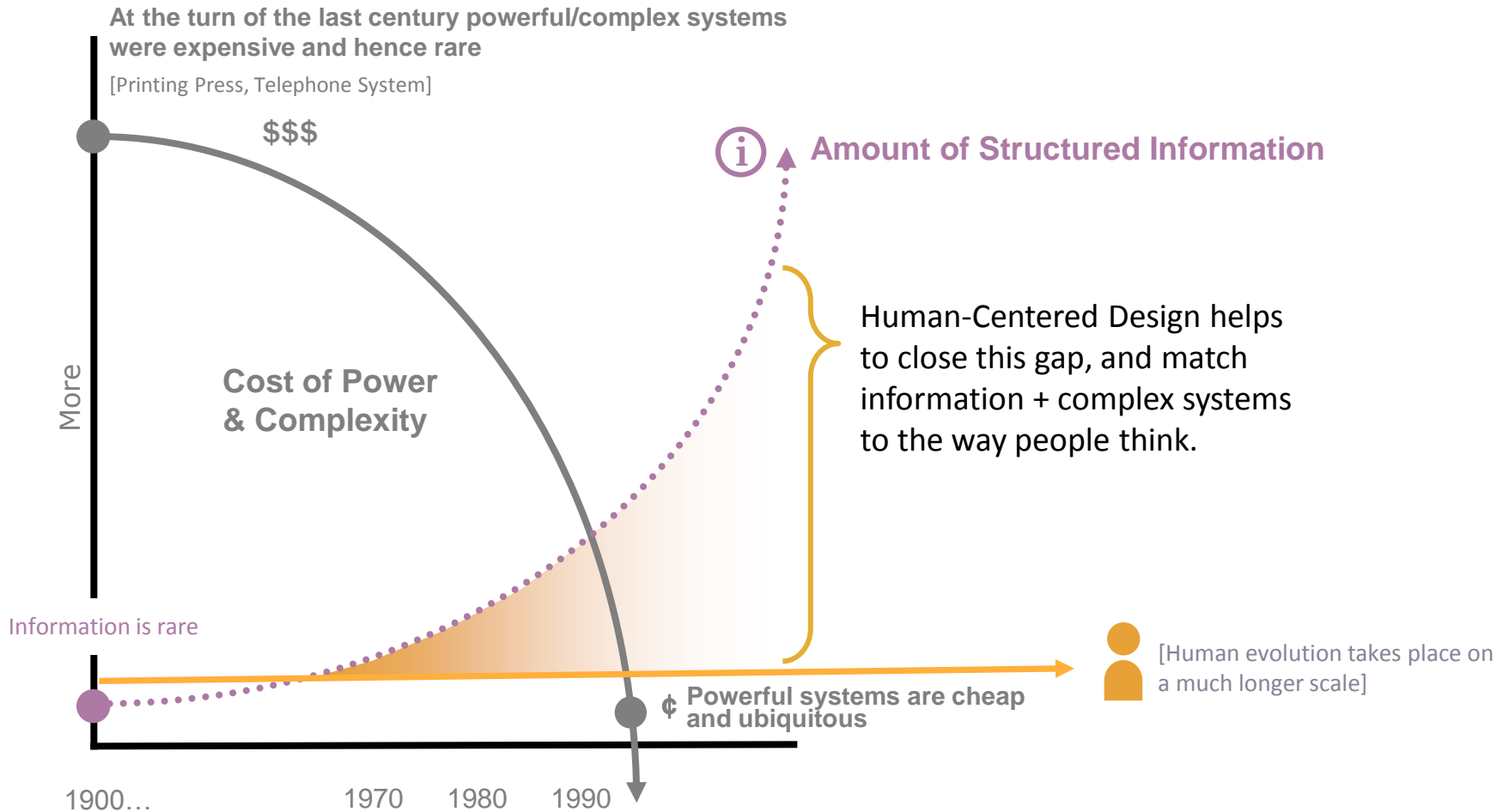
## Data Systems

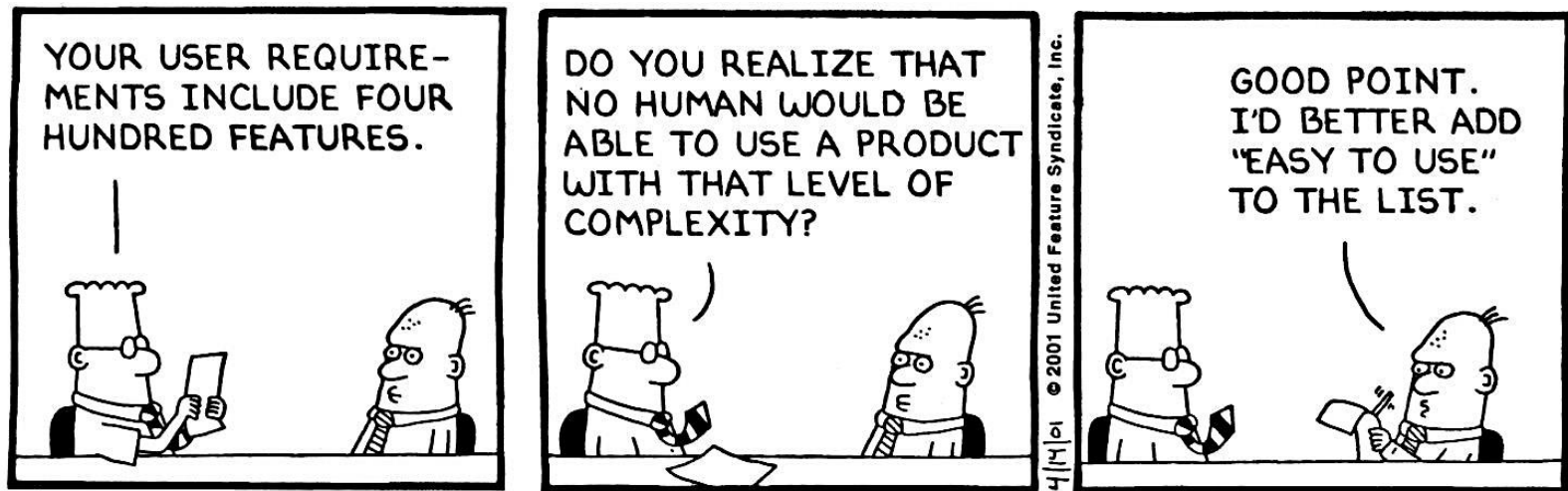
1. CAD
2. RMS
3. Warrants
4. Intelligence
5. Critical Infrastructure
6. Multi-Agency collaboration

## Sensors and End Points

7. Asset / Responder Location
8. Responders as a Sensor
9. Social Media Feeds
10. Cameras (Traffic, Security, News, Industry partners, etc)

# Taming Complexity - The Root of the Problem

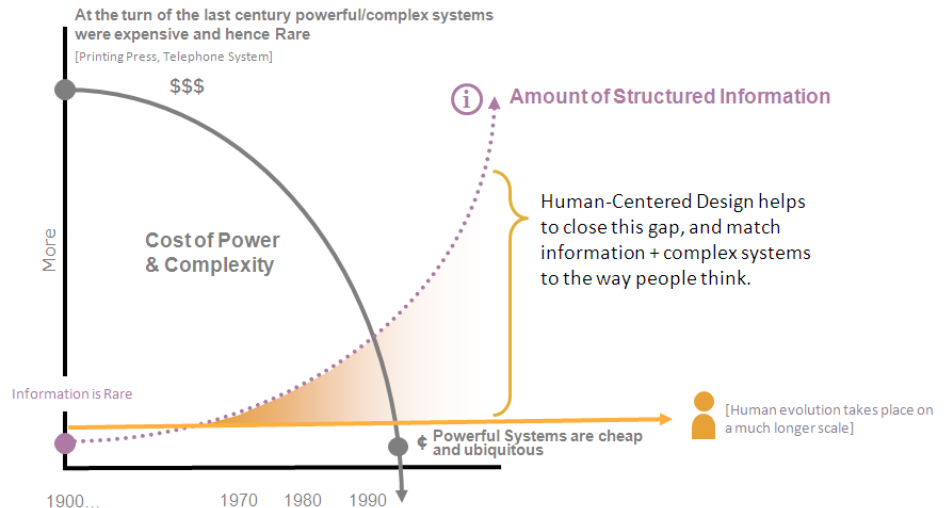




Adams, Scott. Dilbert, www.dilbert.com. 14 Apr. 2001, United Feature Syndicate.

# The Future Experience of the User

- The PSAP or Responder can't manage 10+ systems with thousands of sensor end points on their own
- The Future Experience of the User will be gaining the RIGHT information, at the RIGHT time, with the LEAST amount of effort.



***Less time trying to sift through the data, and more time to make decisions from the information provided to you***

# Leveraging Prior Investments

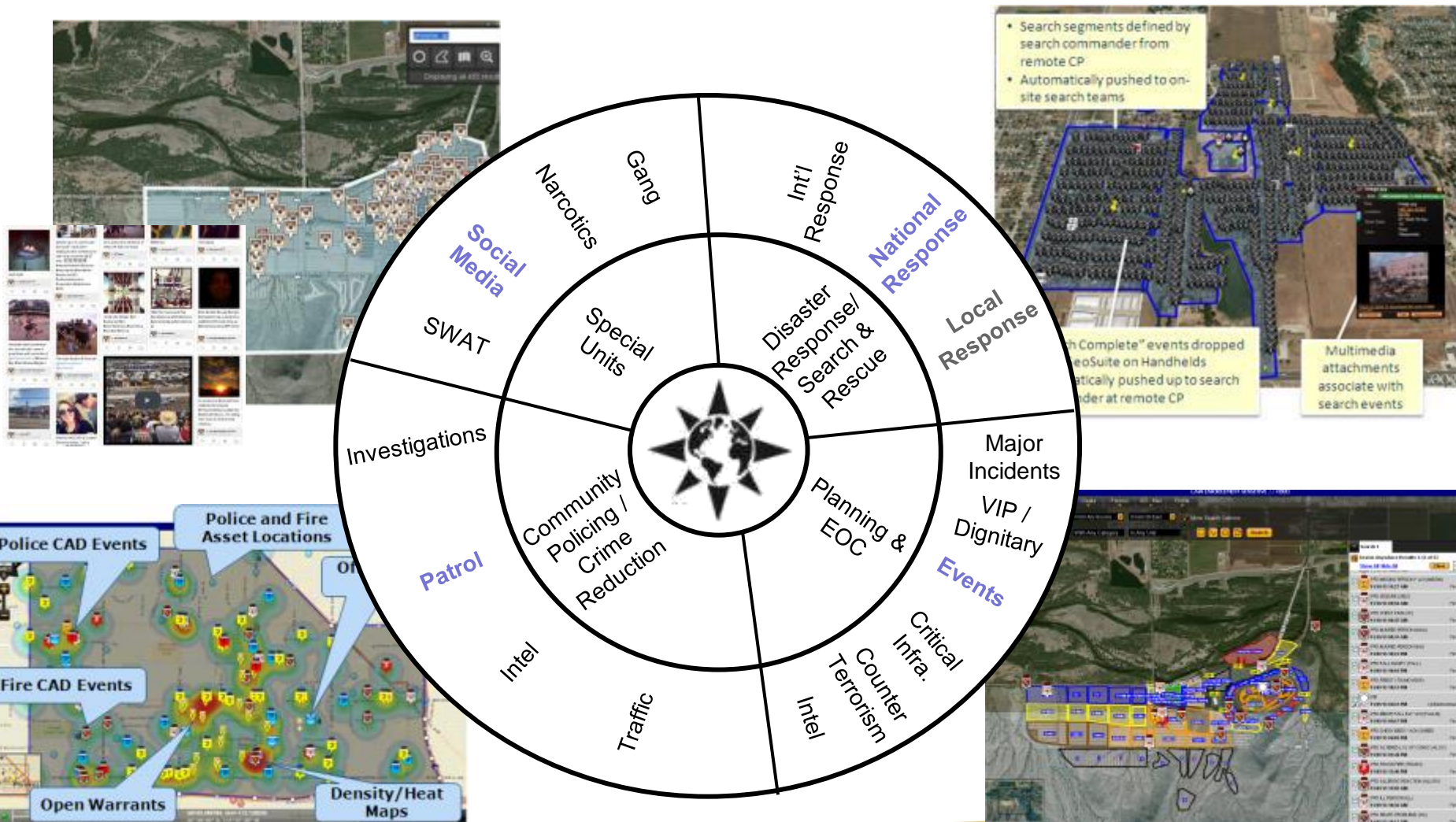
- Public Safety Users can benefit from the investments and maturity of Incident Command and Decision Support capabilities developed by others
  - Individual Capabilities
  - Tools that Integrate Multiple Capabilities





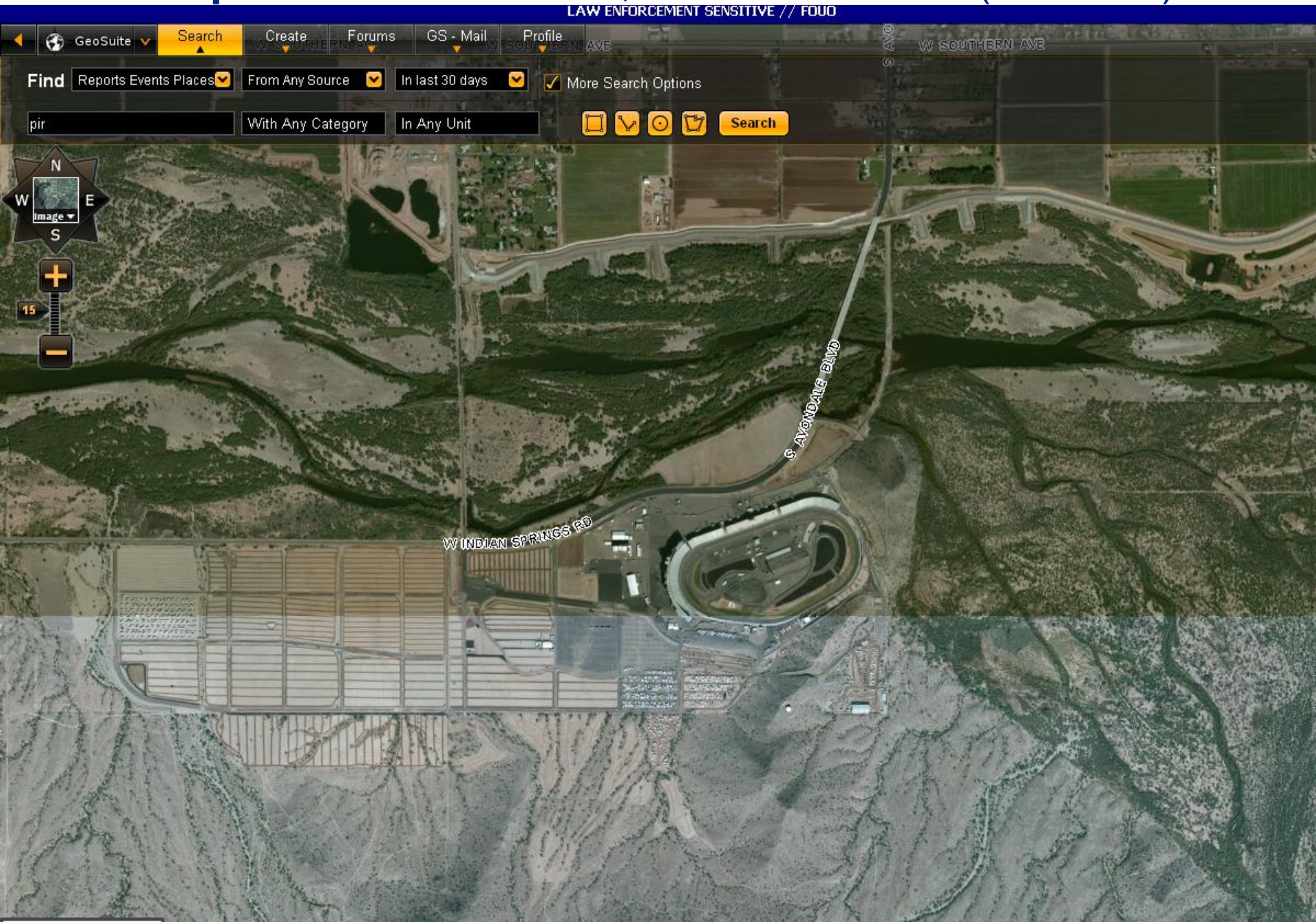
# Example – GeoSuite®

Commercial Equivalent to US Army's Tactical Ground Reporting (TiGR)





# Example – NASCAR Race, Phoenix Arizona (11/10/13)





**LAW ENFORCEMENT SENSITIVE // FOUO**

Place: **PIR**

File

Edit

**LAW ENFORCEMENT SENSITIVE // FOUO**

Title:

PIR

Category:

Other Place

Location:

33.37469, -112.311052

Revised On:

11/09/13 04:32 PM

Unit:

Unified Command  
System/First Responder

Place Summary:

No Summary Provided

Media:

PDF

LAW ENFORC...

RV\_Map\_2...

PDF

LAW ENFORC...

Reserved...

PDF

LAW ENFORC...

Reserved...

PDF

LAW ENFORC...

PIR Faci...

This Place is contained in:

A Collection titled "NASCAR Events"

A Collection titled "PIR 11/2013"

Notify Me

Edit

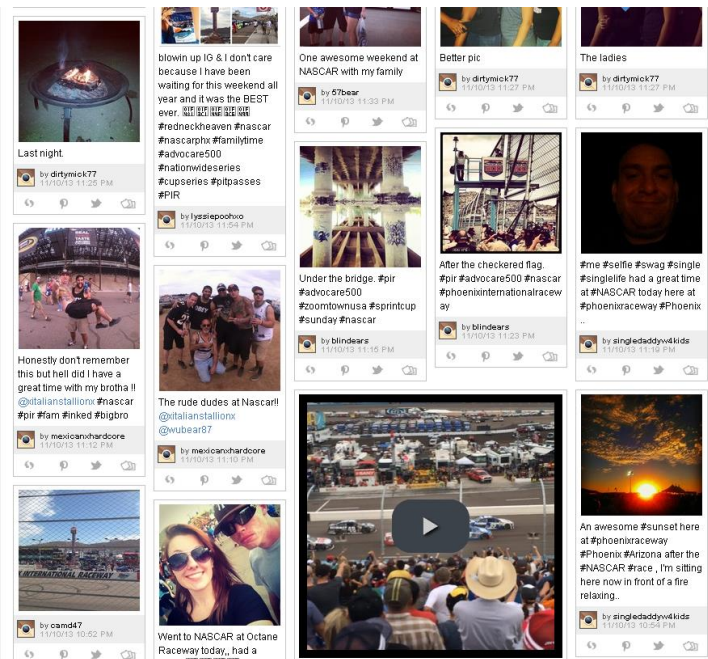
Add Comment



## LAW ENFORCEMENT SENSITIVE // FOUO



# Example – Social Media Feeds as an Additional Layer



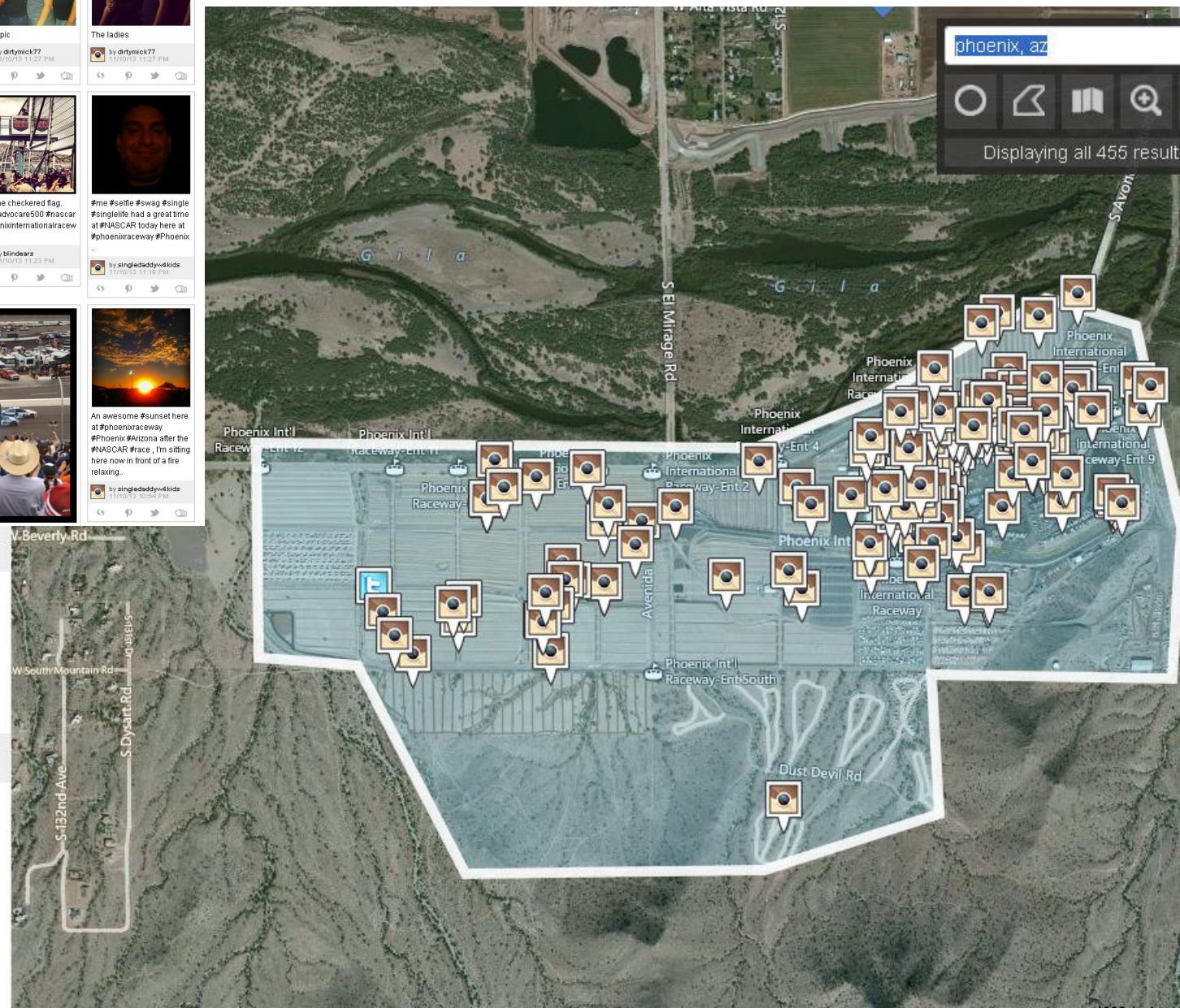
**Data Sources**

Source	Count	Status
Twitter	2	✓
Google+	2	✓
Facebook	0	✓
YouTube	0	✓
Instagram	451	✓

Displaying all 455 results.

**Timezone**

(UTC-05:00) Eastern Time (US & Canada) + Daylight Savings Time Adjustment  
It is currently 4:57 PM in this timezone.





# Example – Integrated Police CAD, Fire CAD and Position Location of Assets

The screenshot displays a GeoSuite interface with a map and a list of incidents. The map shows a city grid with various incident markers. A blue line is drawn across the map, and a red line is also visible. The incident list on the right is titled 'Polygon Search Results 1-2' and contains the following entries:

Incident ID	Incident Description	Time Ago	Category
1	PPD:CHILD ABUSE (312A)	6 minutes ago	Administrator/Police
2	PPD:HIT & RUN ACCIDENT NO INJURY (961H)	10 minutes ago	Administrator/Police
2	PFD:CHEST PAIN (CP)	2 hours ago	First Responder
2	PPD:TRESPASSING (418T)	2 hours ago	Administrator/Police
2	PFD:CHEST PAIN (CP)	2 hours ago	First Responder
2	PFD:BEE ASSIGNMENT (BEE)	2 hours ago	First Responder
2	PPD:VEHICLE STOP (511V)	2 hours ago	Administrator/Police
2	PPD:SUSPICIOUS PERSON (647)	2 hours ago	Administrator/Police
2	PPD:"OPEN DOOR" (900B)	3 hours ago	Administrator/Police
1	PPD:UNKNOWN TROUBLE (927)	3 hours ago	Administrator/Police
3	PPD:LOUD NOISE DISTURBANCE (415E)	3 hours ago	Administrator/Police
+	PFD:FALL INJURY (FALL)	3 hours ago	First Responder

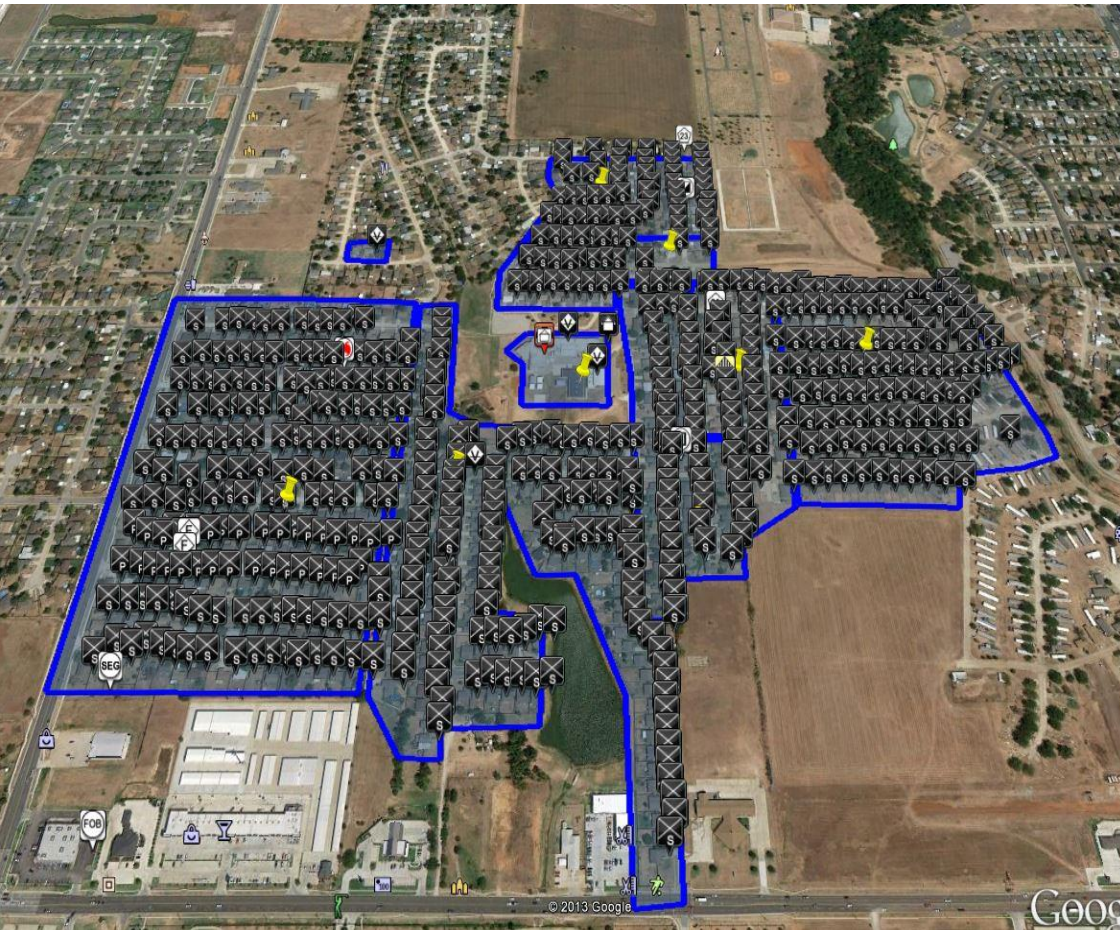
Three callout boxes are present:

- Police Incidents by Priority**: Points to a yellow marker with the number '2' on the map.
- Integrated Incident List**: Points to the incident list on the right.
- Fire Incidents**: Points to a red marker with a fire symbol on the map.



# Example – Search and Rescue Operations

## Moore, OK



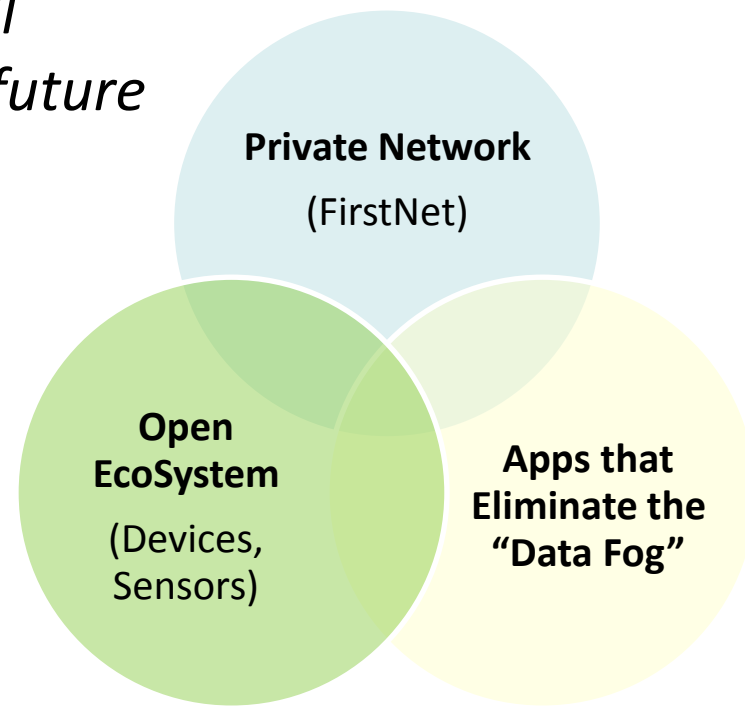
## West, TX



# Emerging Technologies in Public Safety

*Public Safety is beginning to discover a world of connected sensors and data that will transform the way you respond in the future*

1. *Purpose-built private networks, meeting public agencies' demand for secure voice, data and video (the NPSBN by FirstNet)*
2. *Industry's offering of an open Eco-System of devices, end points and capabilities that run on the NPSBN*
3. *Unique visualization and collaboration apps that reduce the "Swivel Chair" paradigm, and manage the "Data Fog"*



# Q & A



Follow General Dynamics C4 Systems at...



[www.GDC4S.com/PublicSafety](http://www.GDC4S.com/PublicSafety)



[facebook.com/GeneralDynamicsC4Systems](https://facebook.com/GeneralDynamicsC4Systems)



[@GDC4Systems](https://twitter.com/GDC4Systems)