



APCO EMERGING TECHNOLOGY FORUM

JASON HUTCHENS,
Global Solutions and Services, Motorola Solutions



ORLANDO, FL | FEBRUARY 2014

2013 APCO EMERGING TECHNOLOGY FORUM



OVERVIEW:

1. TRENDS IN GOVERNMENT AND PUBLIC SAFETY
2. MOVING TOWARDS INTELLIGENCE LED POLICING,
A BETTER COMMON OPERATING PICTURE
AND SITUATIONAL AWARENESS
 - Real Time Crime / Crime Analysis Centers
 - Intelligent Data Portal

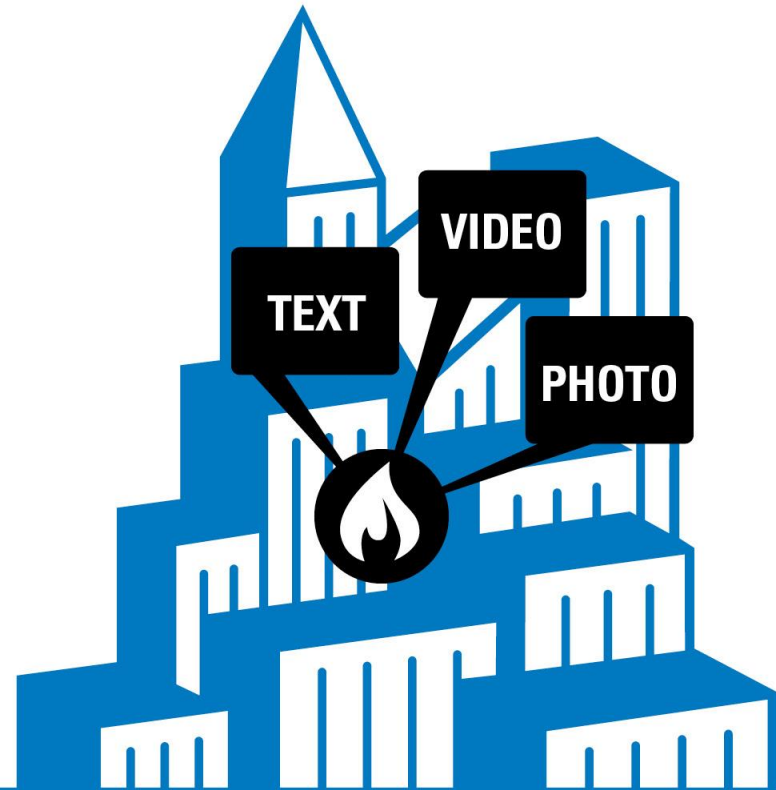
**“It’s not the strongest of the species that survives, nor the most intelligent,
but the one most responsive to change”**
(Charles Darwin, On the Origin of Species 1859)

TRENDS IN GOVERNMENT





GOVERNMENT
CONSOLIDATION
BUDGET
BIG DATA
OPEN
CITIZEN SAFETY
WIRELESS
CITIZEN
INFORMATION
TECHNOLOGY
CLOUD COMPUTING
PUBLIC SAFETY
BYOD
VIRTUALIZATION
SECURITY
DEVICE
MANAGEMENT



TAP YOUR BEST SOURCE OF INTELLIGENCE THE CITY ITSELF

72%

OF GOVERNMENT IT LEADERS WANT
THE ABILITY TO USE VIDEO AND TEXT
MESSAGES PROVIDED BY CITIZENS⁴



4 IN 10 GOVERNMENT LEADERS

**PLAN TO INVEST IN
CLOUD SERVICES
OVER THE NEXT
TWO YEARS²**



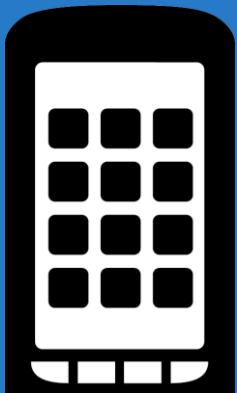
MISSION CRITICAL



89% OF PUBLIC SAFETY
DECISION MAKERS SAY



DATA IS
JUST AS
CRITICAL
AS VOICE



THE AMOUNT OF DATA CIRCLING THE
WORLD IS EXPECTED TO BE
UP 48% FROM THE PREVIOUS YEAR

THE FUTURE IS PREDICTIVE POLICING



70%

**OF LAW
ENFORCEMENT
AGENCIES ARE
EXPLORING
PREDICTIVE POLICING**

90%

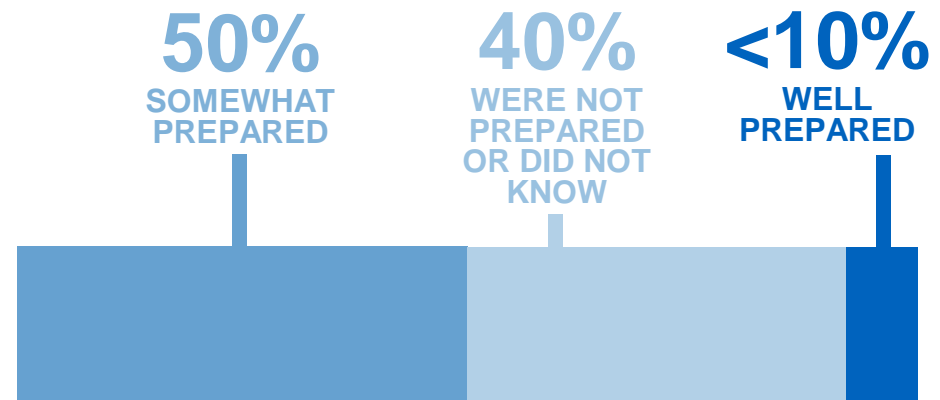
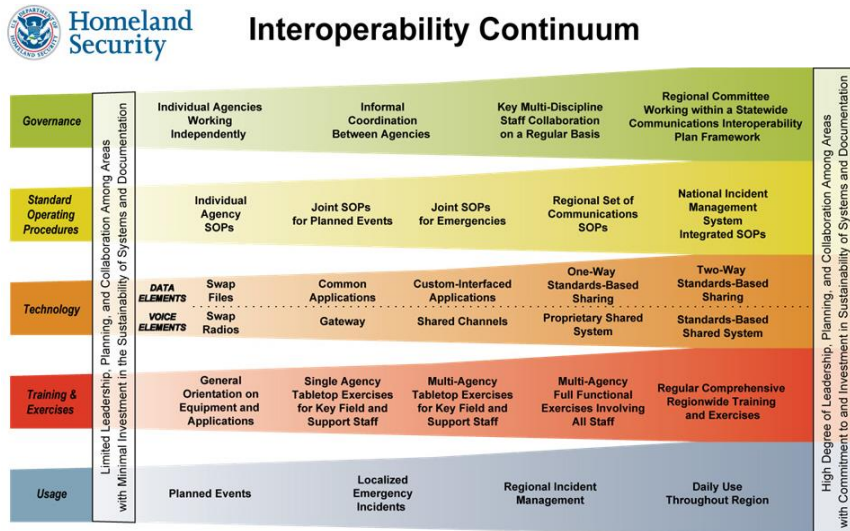
**PLAN TO INCREASE ITS
USE OVER THE NEXT
FIVE YEARS**

A VIEW FROM THE CUSTOMER'S SEAT



WHAT IS THE CURRENT NARRATIVE IN GOVERNMENT?

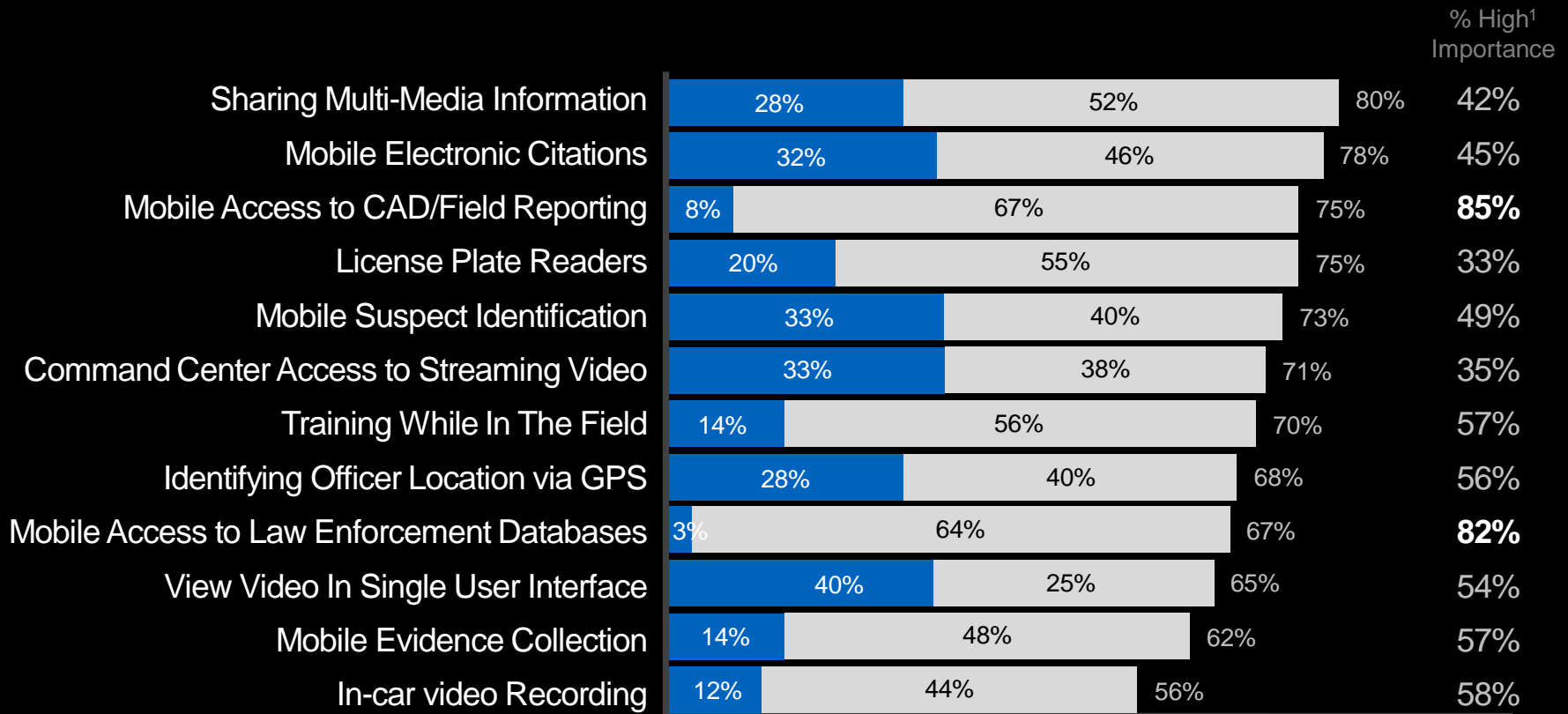
- Make what is feasible optimal... not...make what is optimal feasible.
- Motorola Public Safety Industry Study – **How well prepared are agencies to implement their next generation technology vision:**



REMEMBER: This a business initiative and not an IT project – the IT solution is an investment in performance and business outcomes.

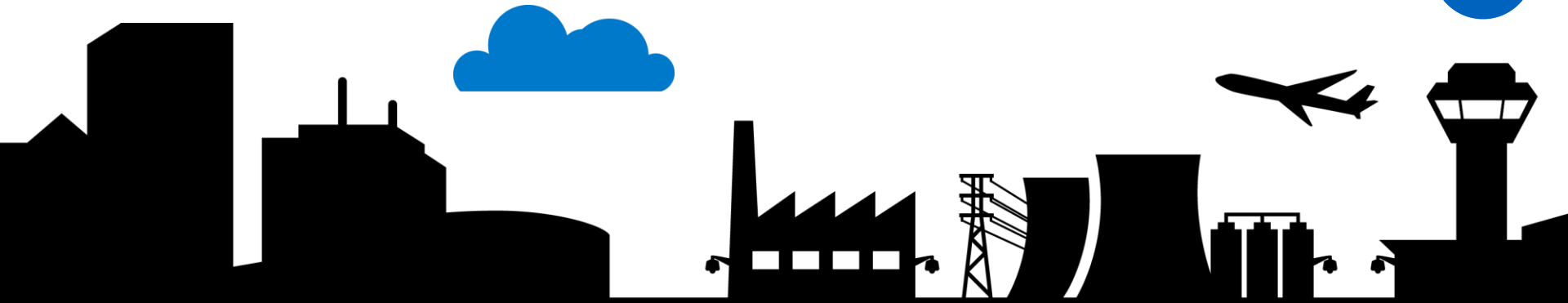
CHIEFS PLANS TO ACQUIRE/EXPAND

LAW ENFORCEMENT/PATROL OFFICE CAPABILITIES



■ Don't Have, but Plan to Acquire ■ Have and Plan to Expand

¹Importance to meeting Police Chief's overall priorities.



ESCAPING THE CYCLE

MAKING THE CITY SAFER IS AN IMPERATIVE

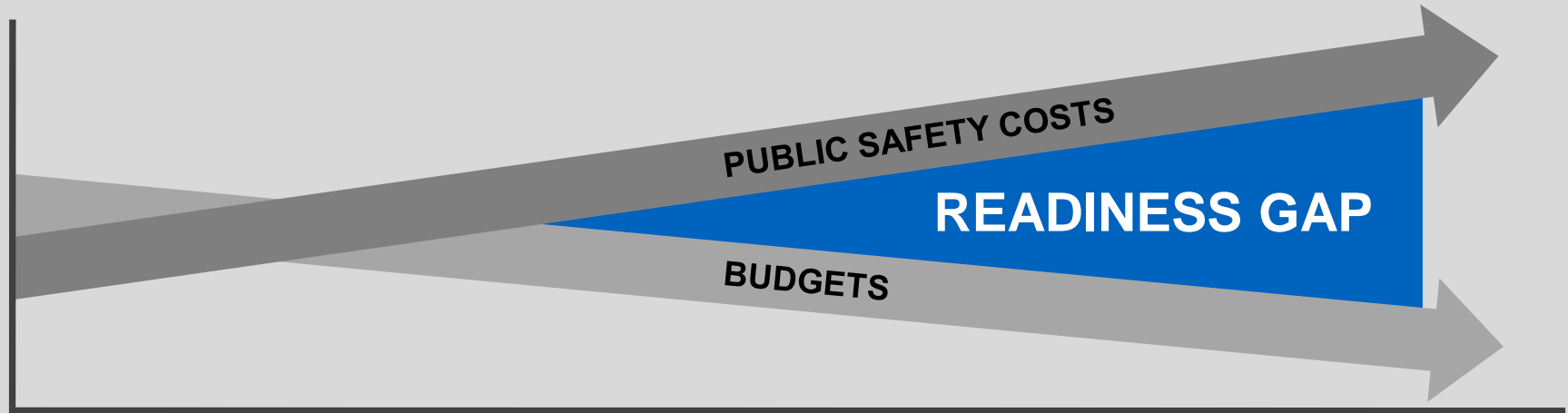
1 ► 70

Every homicide that occurs in the city results in a population decline of 70 citizens

\$1 ► \$5

Every dollar of public safety investment has been shown to return five dollars of economic results

IN SUMMARY: THE FUTURE LOOKS LIKE THIS



- **INCREASING COMPLEXITY**
 - Rapidly changing IT environments
 - Fragmentation (IT, policy, programs, \$)
- **THE REQUIREMENT TO DEMONSTRATE ROI**
- **MULTI-PURPOSE INVESTMENTS**
- **KEY PERFORMANCE INDICATORS (KPIs)**
- **THE NEED FOR TRUSTED ADVISORS TO SORT THROUGH THE GROWING COMPLEXITY**
- **A CHANGE IN THE STATUS-QUO**
 - Public safety mission critical architecture
 - Public safety IT ecosystem helping simplify network management
 - Purchasing, maintaining and migrating



THE STREET **NEVER STANDS STILL**

THREATS INCREASE, RESOURCES DECREASE AND YOU'RE ASKED TO HOLD THE LINE

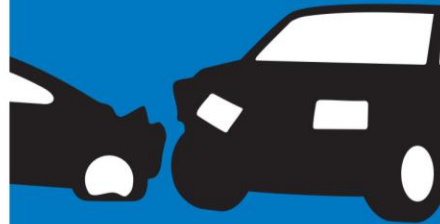
**EVENTS ARE
PLANNED**



**THE WORLD
CONVENES**



**ACCIDENTS
HAPPEN**



**DISASTERS
STRIKE**



SAFER CITIES. THRIVING COMMUNITIES.



**TECHNOLOGY MUST SOLVE KEY CHALLENGES IN THE FIELD,
IN COMMAND AND CONTROL AND IN THE NETWORK OPERATIONS CENTER**



PROCEED WITH INTELLIGENCE

STAY AHEAD OF WHAT'S NEXT WITH
MISSION-CRITICAL INTELLIGENCE



CONNECT WITH THE CITY

TAP YOUR BEST SOURCE OF
INTELLIGENCE: THE CITY ITSELF



MANAGE THE COMPLEXITY

IT IS THE ONE LINK THAT
STRENGTHENS ALL OTHERS

REAL-TIME CRIME CENTERS CRIME ANALYSIS CENTERS

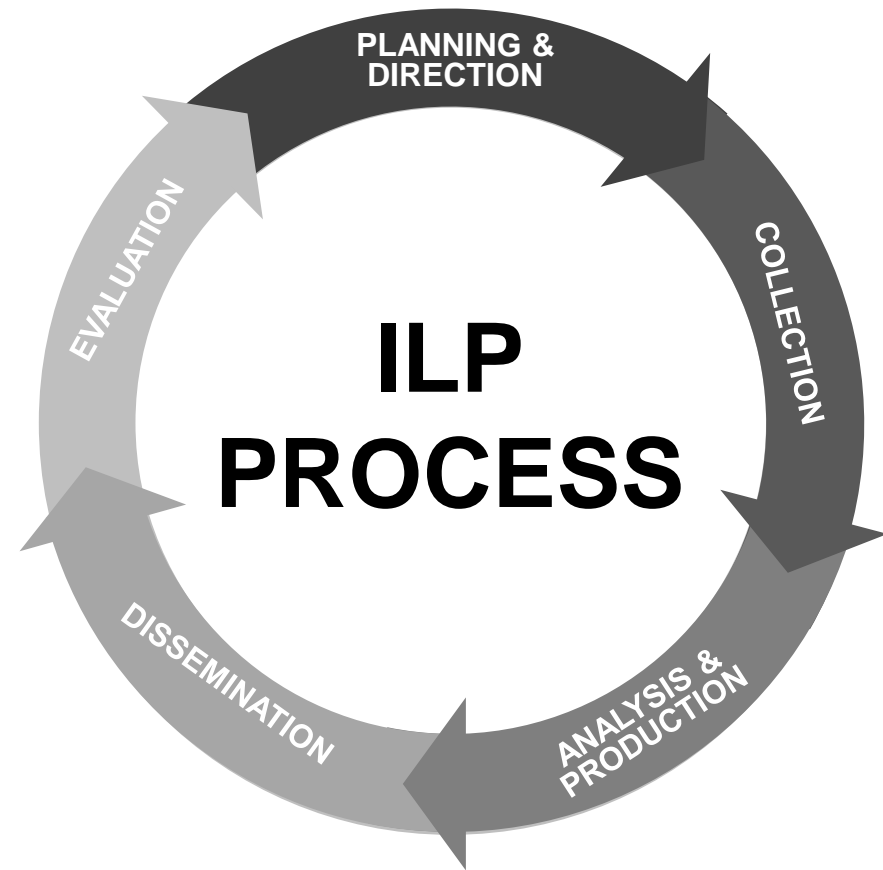


INTELLIGENCE LED POLICING



RTCC & INTELLIGENCE LED POLICING

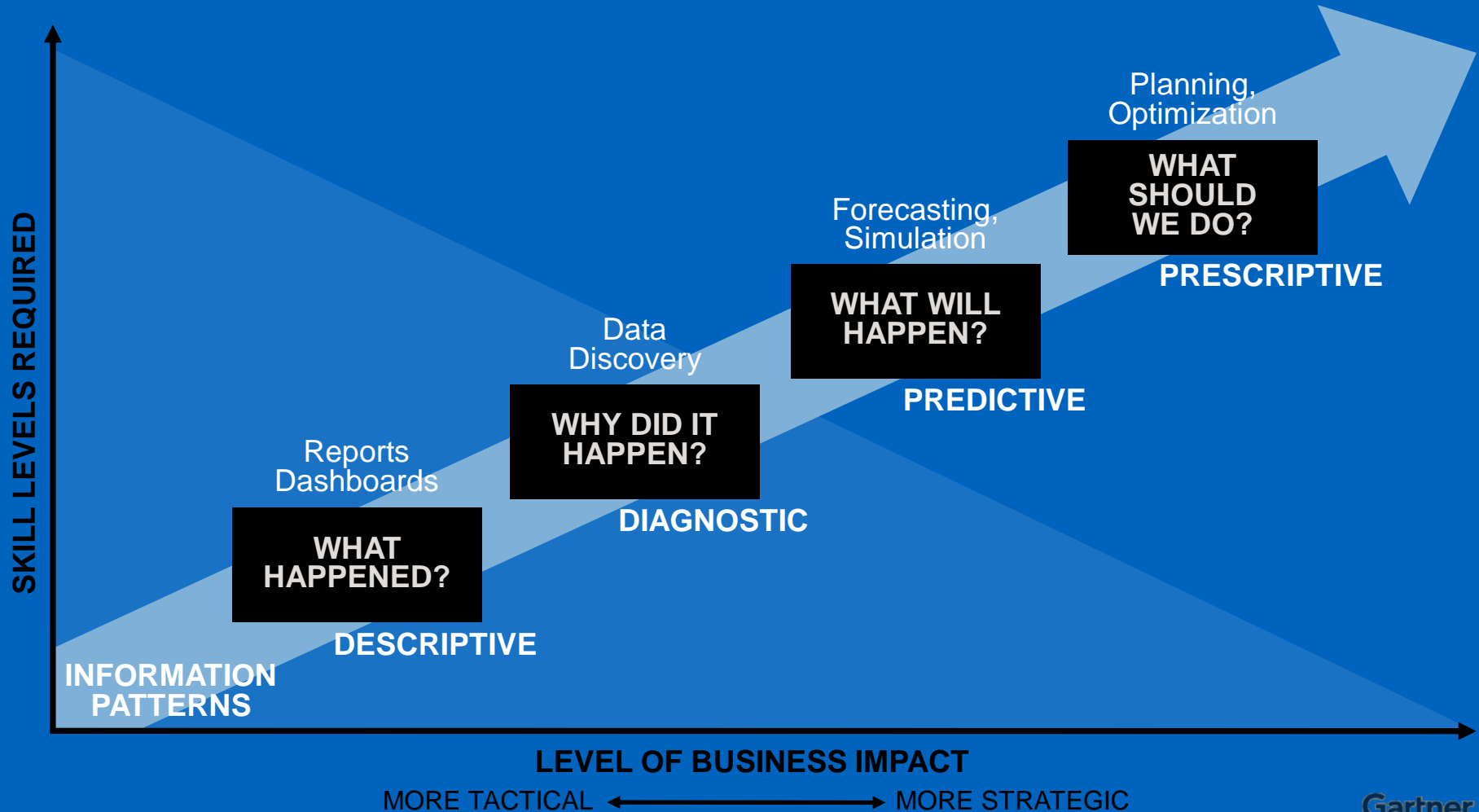
- Integration of multi-media and data into operational workflows is becoming the norm and expected form of policing
- Agencies are adopting the ILP model for their build-outs
- ILP enables crime reduction, disruption and prevention through both tactical and strategic data and information analysis.
- RTCC is key to deliver on the MSI 'Safer Cities, Thriving Communities' value proposition



Intelligence led policing is a business model and managerial philosophy where data analysis and crime intelligence are pivotal to an objective, decision making framework that facilitates crime and problem reduction, disruption and prevention through both strategic management and effective enforcement strategies...

(Ratcliffe, 2008)

ANALYTICS CONTINUUM



Gartner

WHAT IS A REAL TIME CRIME CENTER?



CALL TAKING

DISPATCH

EMERGENCY
OPERATION
CENTER (EOC)

FUSION
CENTER (FC)

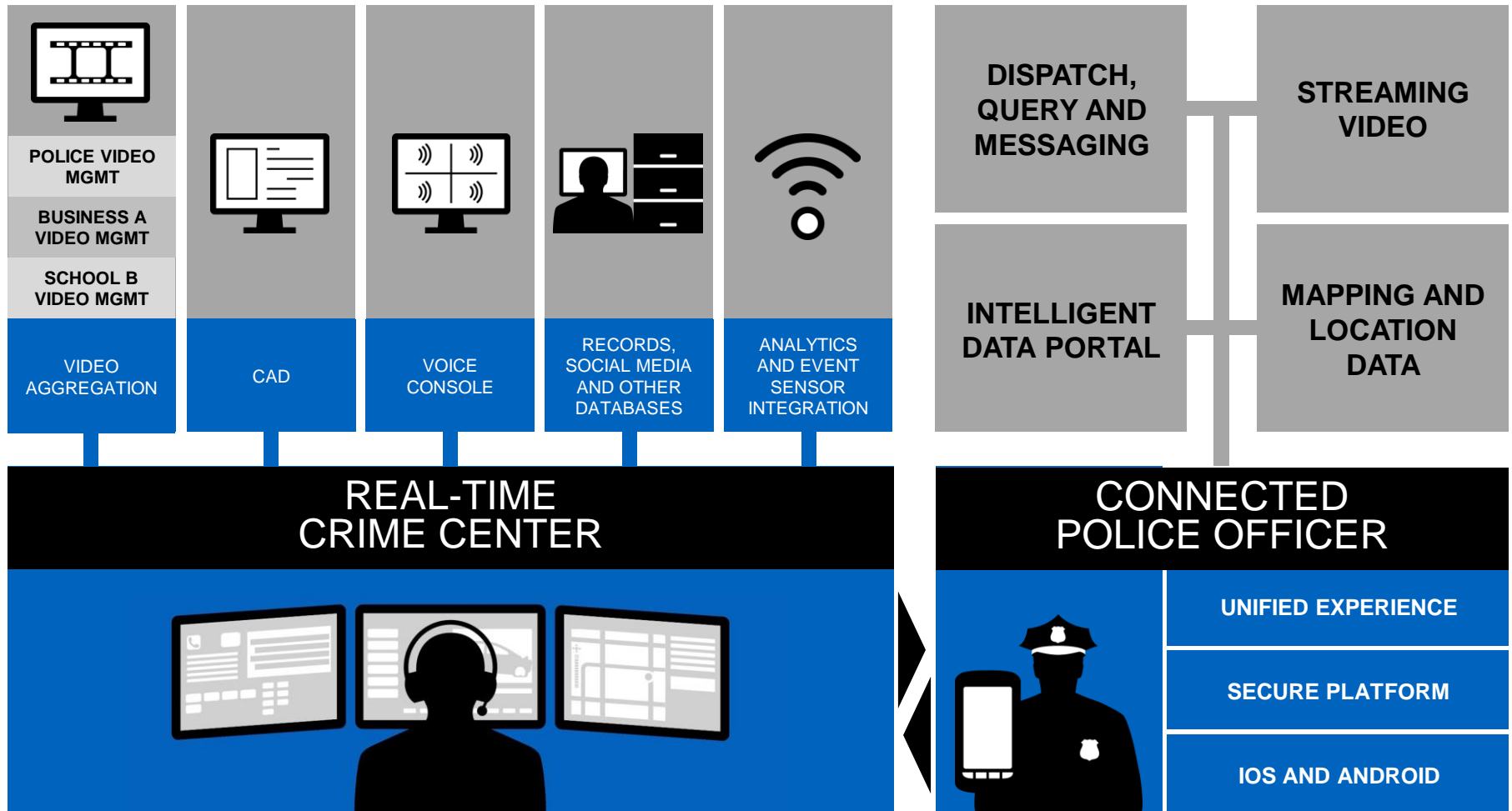
**REAL TIME
CRIME
CENTER**



- Converges multiple data sources to aid in the decision-making process
- Staffed by Crime Analysts and Criminal Investigators to handle real-time incidents
- Provides data analysis for instantaneous access to required information
- Enables data merging to identify patterns and trends in criminal activity
- Includes the “data wall” that allows officers simultaneous incident monitoring convergence



RTCC AND CONNECTED POLICE OFFICERS



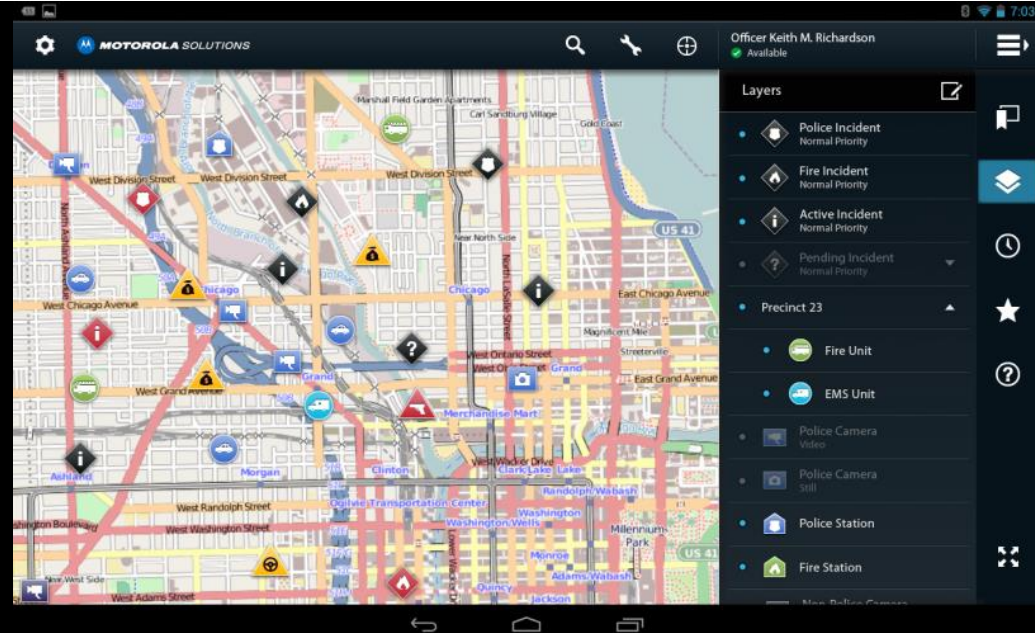
INTELLIGENT DATA PORTAL



INTELLIGENT DATA PORTAL



**UNIFY,
MOBILIZE AND
IDENTIFY
YOUR DATA**



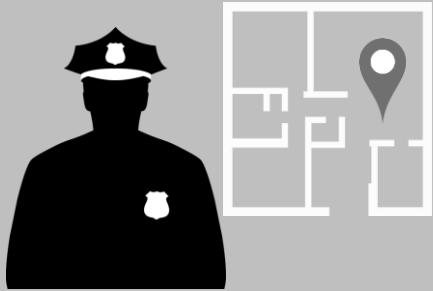
- **MAPPING OF DATA, EVENTS, ALERTS, SENSORS, PEOPLE AND ASSETS IN ONE VIEW**
- **HIGHLIGHTS POTENTIALLY RELATED DATA IN VICINITY**
- **ALWAYS UP-TO-DATE FOR ON-DEMAND VIEWING**
- **HTML5 CLIENT WORKS ON ANY DEVICE, OPERATING SYSTEM AND NETWORK**
- **HOSTED, LOW-LATENCY CLOUD BASED SOLUTION**

INTELLIGENT DATA PORTAL CONNECTS



- CAD Incident View
- Agency GPS Tracking
- Exec. Resource Monitor
- Analytics
- Bio-Monitoring
- Sensor Monitoring
- Location Awareness
- CrimeView Heatmap

USE CASES



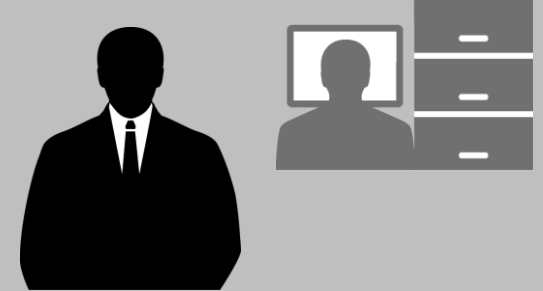
BETTER INFORMATION, SAFER OUTCOMES (TACTICAL)

Public Safety Responders In The Field need location-based information to be more proactive about developing situations and to keep them safer. Intelligent Data Portal provides the officer to ever-changing situations, nearby hazards and alerts from multiple data sources



ONE OPERATING VIEW (OPERATIONS)

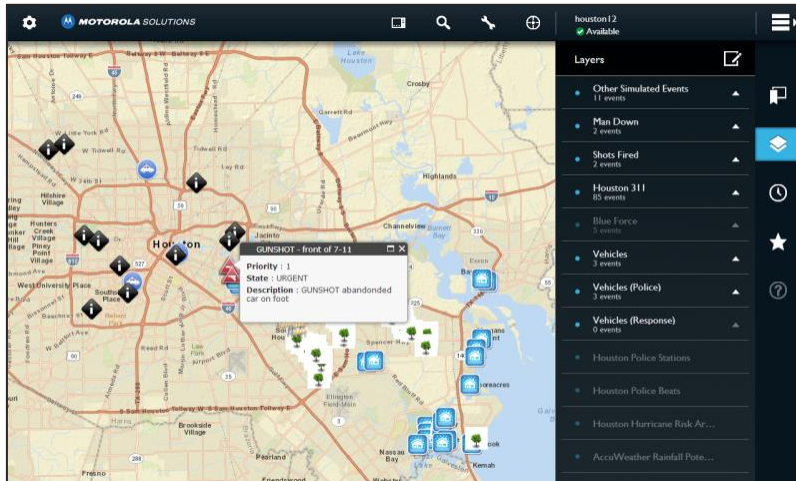
Incident Commanders and RTCC staff can view key data from various data systems that previously required separate applications and interfaces. They can now sign-on to one application reducing their need to switch between multiple applications. Enables cross-agency information sharing and enhanced situational awareness



CRIME ANALYSIS AND SUPERVISION (STRATEGIC)

Investigators and officials can view the location-based mapping of hot spots and repeat incident reporting to enhance investigative abilities and provide easy oversight.

OPERATIONAL USE OF AN INTELLIGENT DATA PORTAL



IDP CORE

- ESRI Basemaps (Streets and Satellite)
- Real Time Traffic (Worldwide)
- AccuWeather Static Hi-Res Radar Image
- NWS Weather Warnings
- Current Weather Conditions
- Publish 2 On-Prem Data Sources
- Exec. Reporting Dashboard
- 24/7 Call Support
- Cloud Hosting Fees
- Solution Maintenance Fees

BEYOND THE CORE SOLUTIONS



OPERATIONS

- Current CAD Incidents Layer
- Radio / Vehicle GPS Tracking
- AIS Ship / Vessel Tracking



TACTICAL

- Collaboration Whiteboard
- Real Time Staging
- Picture / Video Viewing Layer



WEATHER

- Local Storm Reports
- Animated Radar Loop
- Lightning Strike Layer



ANALYTICS PACKAGE

- Patrol Efficiency
- Calls For Service
- Predictive Unit Monitor
- Crime Heatmaps
- Response Time Metrics



ENVIRONMENT

- Earthquake Reporting
- Wildfire Perimeter Layer
- Hurricane Tracker
- Flooding Impact Zones



SENSOR

- Radiological, Biological, Environmental Sensor
- Zephyr Bio-Monitor
- Bio monitoring

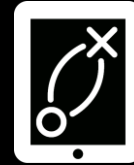
SUMMARY



1. **Consider Professional Services Engagements as Part of Your IT Investment**
 - A Lot of Products Out There
 - Understand Needed Capabilities, Goals and Operational Impact



2. **Create, Know and Drive Key Performance Indicators (KPIs)**



3. **Think About a Maturity Model and Evolution Now for Your Strategic IT Investments**



4. **Don't Forget the People and Process Parts, They May be Harder Than the Technology**



5. **Document from the Beginning, Build Small Wins and Grow**

“There are many ways to measure innovation, but perhaps the most elemental yardstick, at least where technology is concerned, revolves around the job that the technology in question lets you do.”

- Where Good Ideas Come From, Steven Johnson

THANK YOU



JASON D. HUTCHENS

Solution Engagement Manager – Government

317.502.7642

jasonhutchens@motorolasolutions.com